

Somerset Square
West Kensington, W14

Dexters



About the property

A Georgian style house with a garage and off-street parking in an exclusive and private development in Holland Park.

Set within a private square with manicured gardens and entered on the ground floor. The open plan reception room on the ground floor has a recently refurbished kitchen/dining room and leads out to the west facing garden.

On the first floor there's a double reception room which leads to a separate study, creating a double aspect space with large windows.

The principal suite has a twin bathroom and currently utilises a double bedroom as a dressing room with built in wardrobes. On the top floor is a spacious en suite bedroom with a walk-in closet and private balcony. There's a further bedroom, utility room, private garage and the house has air conditioning in the principal rooms and is presented in good order throughout.

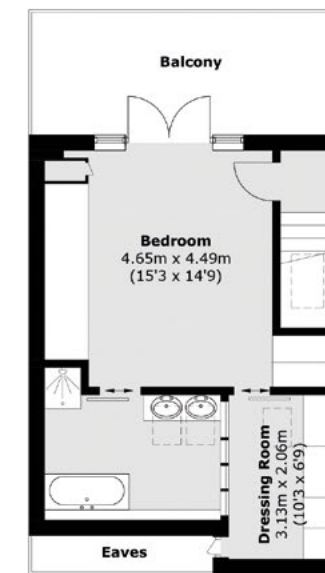
Somerset Square is ideally located off Addison Road, near the manicured green spaces of Holland Park and within walking distance of a choice of restaurants and shops on Kensington High Street.

Key features

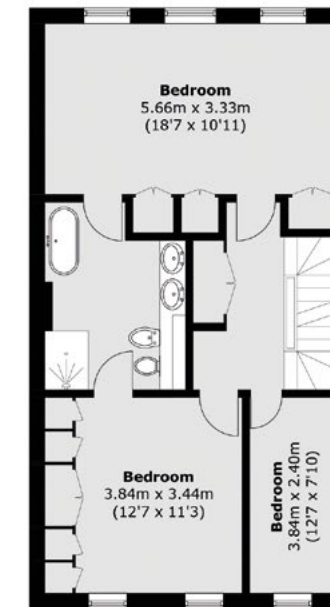
- Four Bedrooms
- Study
- Two Reception Rooms
- Off Street Parking
- Garage
- West Facing Garden



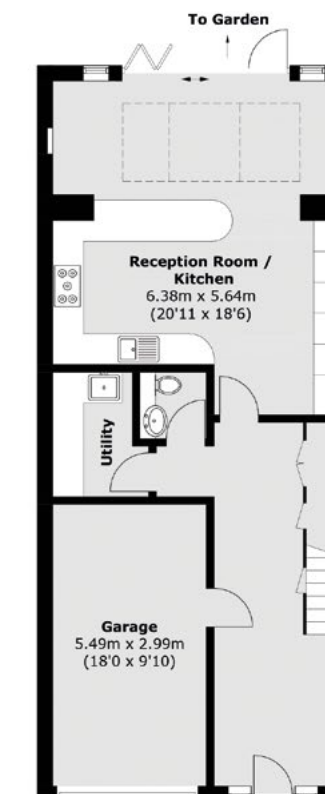




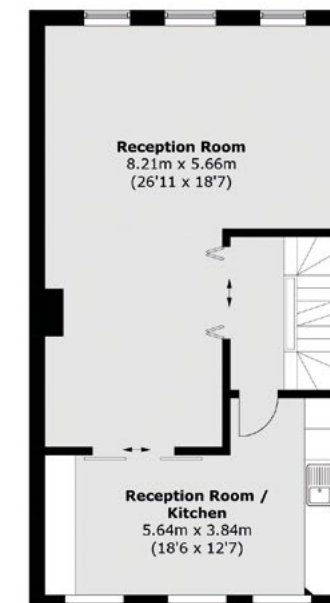
Third / Top Floor



Second Floor



Ground Floor



First Floor

TOTAL APPROX. FLOOR AREA 2,673.5 SQ. FT (246.7 SQ. M)
BALCONY AREA (APPROX.) 158.2 SQ. FT (14.7 SQ. M)
(INCLUDING GARAGE/EXCLUDING EAVES)

Energy Rating: C. We aim to make our particulars both accurate and reliable. However they are not guaranteed; nor do they form part of an offer or contract. If you require clarification on any points then please contact us, especially if you're traveling some distance to view. Please note that appliances and heating systems have not been tested and therefore no warranties can be given as to their good working order.



Dexters Westbourne Grove
120 Westbourne Grove,
London, W11 2RR
020 7313 3600

Dexters