



## Chesterton Road, W10

### £599,950

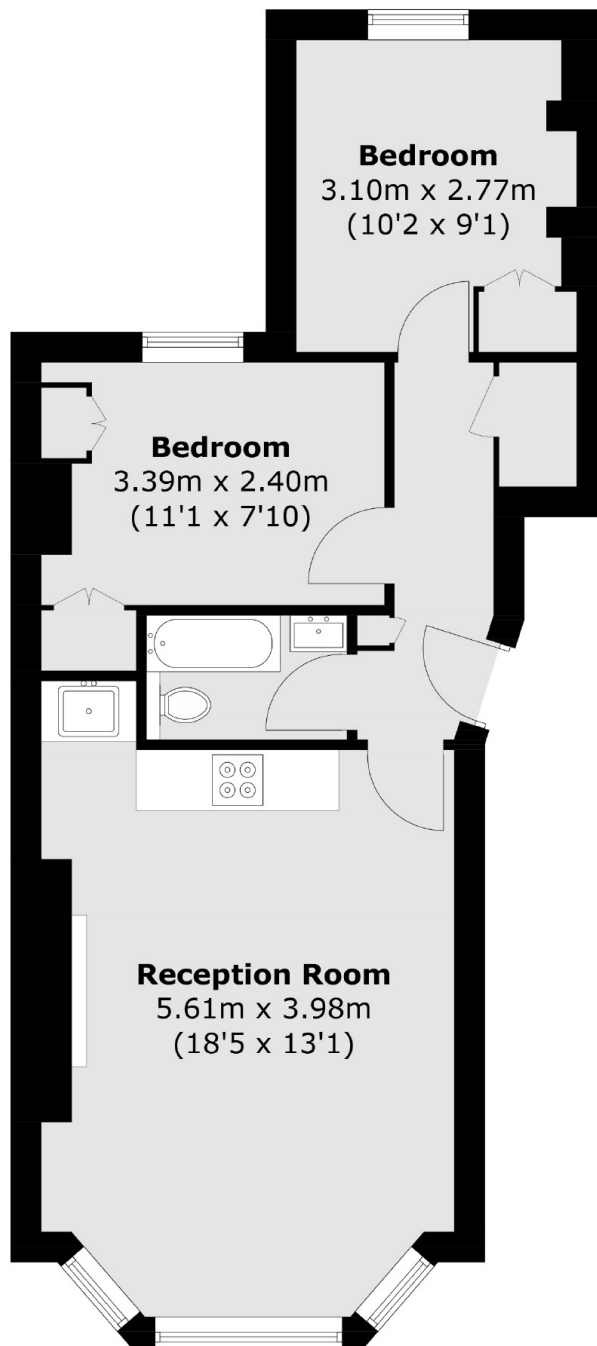
A two bedroom apartment on the raised ground floor of a Victorian conversion. The property has a well sized open plan reception with fitted modern kitchen, bay window, wooden flooring and a feature fireplace. There are high ceilings throughout, and built in storage in both bedrooms.

Chesterton Road is a fantastic location, offering great transport links and just moments from the well known Portobello Road and the eclectic Golbrone Road. There is also easy access to the A40 and Ladbroke Grove underground station.

### Features

- Two Double Bedrooms
- Open Plan
- High Ceilings
- Share Of Freehold
- Close to Amenities
- RBKC

Chesterton Road,  
London, W10



Total area (approx.): 47.9 sq. m (515.6 sq. ft)

**Dexters**

Westbourne Grove  
120 Westbourne Grove  
London  
W11 2RR  
Sales  
020 7313 3600

Energy Rating: C. We aim to make our particulars both accurate and reliable. However they are not guaranteed; nor do they form part of an offer or contract. If you require clarification on any points then please contact us, especially if you're traveling some distance to view. Please note that appliances and heating systems have not been tested and therefore no warranties can be given as to their good working order.

 **RICS** | Regulated  
Estate Agent  
and Letting Agent

[dexters.co.uk](https://www.dexters.co.uk)