



Hatherley Grove, W2

£650,000

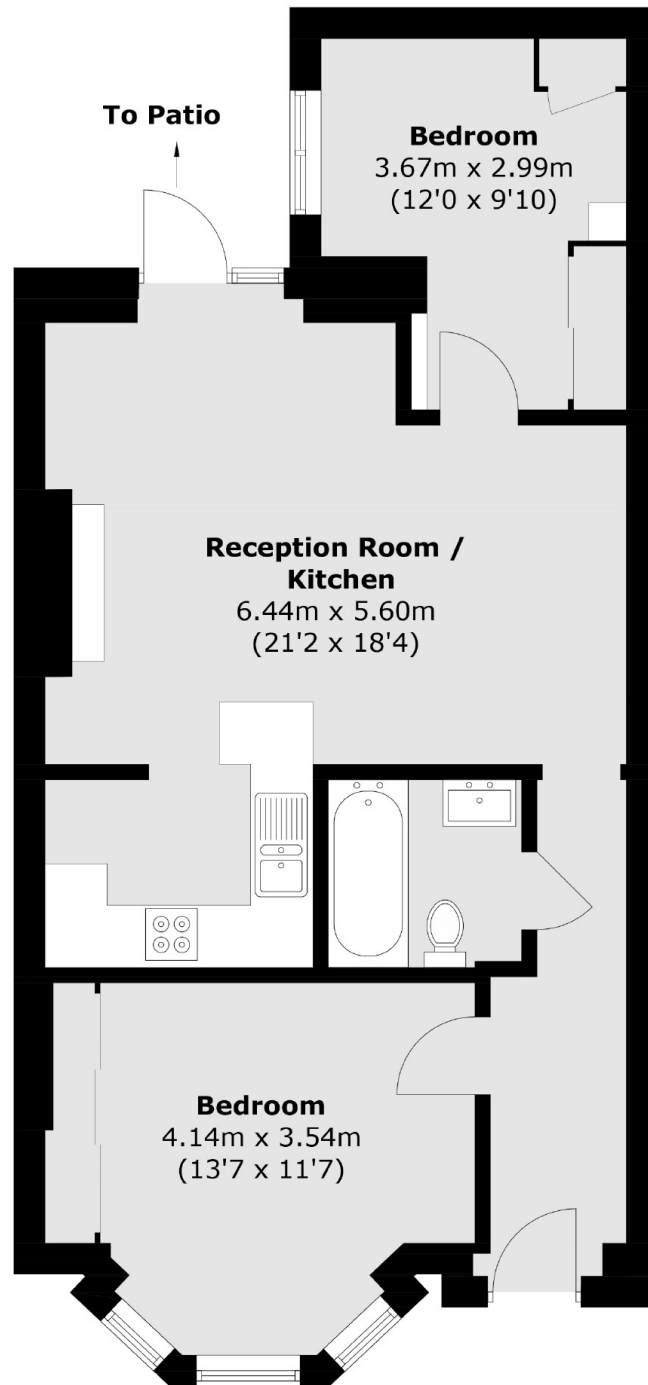
A two bedroom apartment with its own front door, in a Victorian period conversion. The property has an open plan reception room and kitchen, with room to dine and direct access to the private patio, both bedrooms have in built storage.

Hatherley Grove is a residential road in between Notting Hill and Bayswater and close to the Whiteley's regeneration project. For green spaces, Hyde Park is close by and there's plenty of local amenities and transport links.

Features

- Two Bedrooms
- Own Front Door
- Private Patio Garden
- Victorian Conversion
- Open Plan
- Share of Freehold

Hatherley Grove, London, W2



Total area (approx.): 61.4 sq. m (660.9 sq. ft)

Dexters

Westbourne Grove
120 Westbourne Grove
London
W11 2RR
Sales
020 7313 3600

Energy Rating: C. We aim to make our particulars both accurate and reliable. However they are not guaranteed; nor do they form part of an offer or contract. If you require clarification on any points then please contact us, especially if you're traveling some distance to view. Please note that appliances and heating systems have not been tested and therefore no warranties can be given as to their good working order.

 **RICS** | Regulated
Estate Agent
and Letting Agent

[dexters.co.uk](https://www.dexters.co.uk)