

Queens Gardens, W2

£999,000

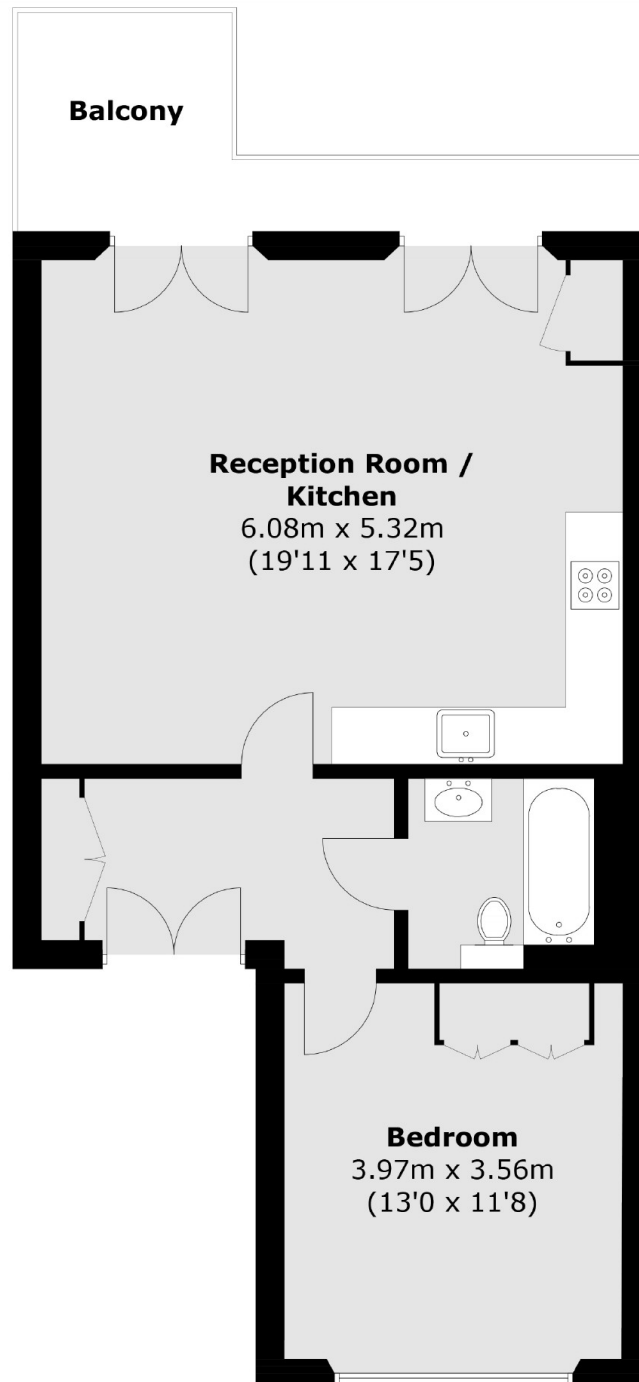
A first floor one bedroom apartment in a well maintained early Victorian conversion, with elegant communal areas. The property has an open plan reception with modern fitted kitchen, room to dine and access to the balcony overlooking the communal gardens. Finished beautifully and with period features and magnificently high ceilings throughout.

Queens Gardens is one of Bayswater's most sought after garden squares, Hyde Park is a short walk away, with Lancaster Gate the closest underground and plenty of amenities on the doorstep.

Features

- First Floor Flat
- High Ceilings
- Period Features
- Private Balcony
- Share of Freehold
- Garden Square

Queens Gardens, London, W2



Total area (approx.): 60.3 sq. m (649.1 sq. ft)
Balcony area: 8.4 sq. m (90.4 sq. ft)

Dexters

Westbourne Grove
120 Westbourne Grove
London
W11 2RR
Sales
020 7313 3600

Energy Rating: D. We aim to make our particulars both accurate and reliable. However they are not guaranteed; nor do they form part of an offer or contract. If you require clarification on any points then please contact us, especially if you're traveling some distance to view. Please note that appliances and heating systems have not been tested and therefore no warranties can be given as to their good working order.

 **RICS** | Regulated
Estate Agent
and Letting Agent

[dexters.co.uk](https://www.dexters.co.uk)