



Sirdar Road, W11

£1,700,000

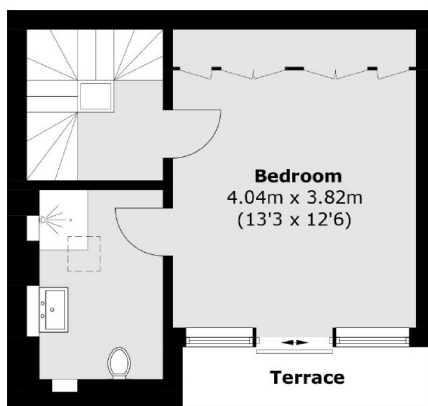
A well presented modern townhouse measuring over 1,800 Square Foot, with three bedrooms and two bathrooms (one en suite). There's a high specification open plan kitchen with dining, separate reception room, cinema room and utility room.

Sirdar Road is a tree lined residential road, in between Latimer Road and Holland Park Underground stations, within close walking distance of the green spaces of Avondale Park and plenty of shops and restaurants in Holland Park.

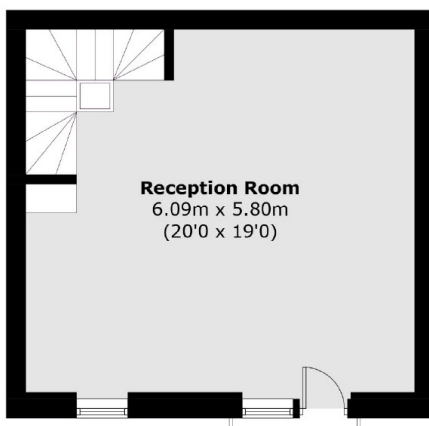
Features

- Three Bedrooms
- Two Bathrooms
- Open Plan Kitchen / Dining
- Reception and Cinema Room
- Modern Town House
- Balcony
- Utility Room

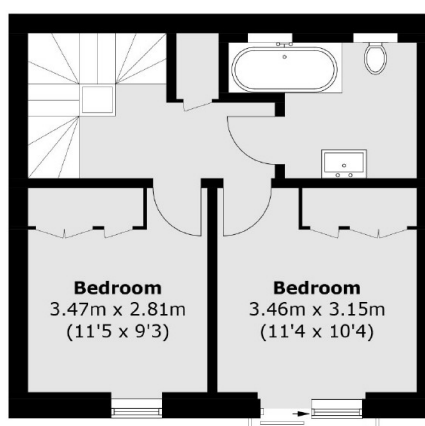
Sirdar Road,
London, W11



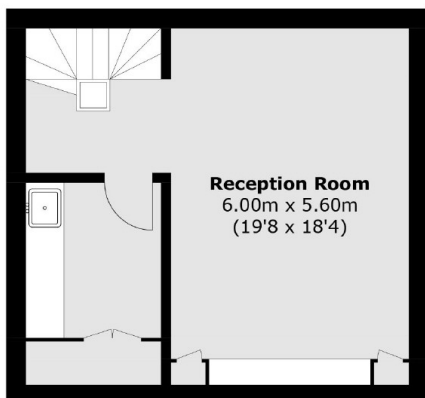
Third Floor



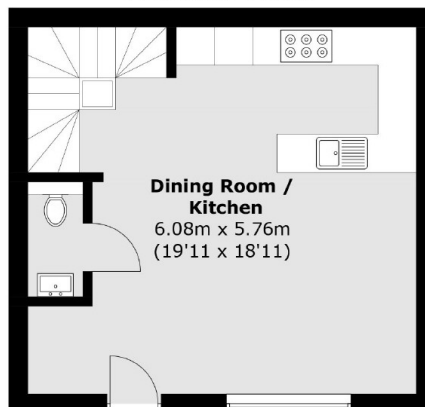
First Floor



Second Floor



Lower Ground Floor



Ground Floor

Total area (approx.): 170.2 sq. m (1,832.0 sq. ft)
Terrace: 3.7 sq. m (39.8 sq. ft)