



Elgin Crescent, W11

£1,100,000

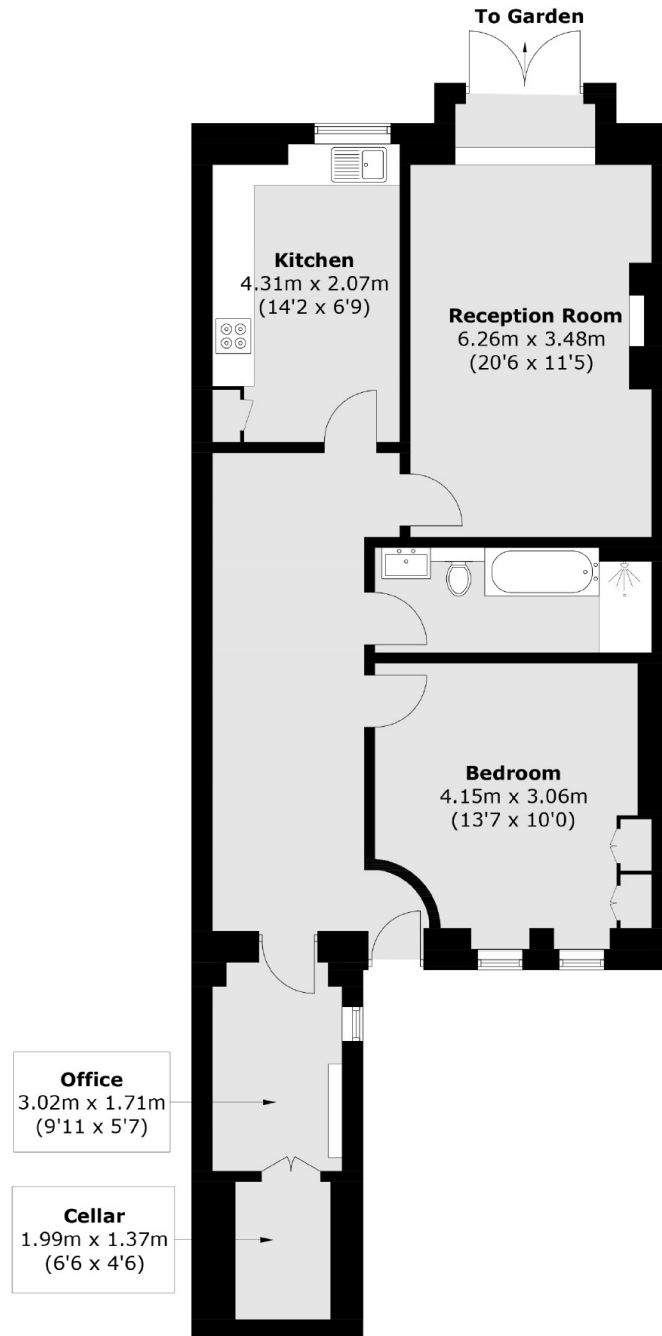
A beautifully presented garden flat in a stucco fronted Georgian Conversion. The property has a spacious reception with wooden flooring and room to dine. There is a separate, modern kitchen with breakfast bar, double bedroom and direct access to the impeccable private communal gardens.

Elgin Crescent is a prime road in Notting Hill just off Portobello Road and a short walk to the Ladbroke Grove tube station. There are plenty of local pubs, restaurants and boutiques nearby and the green spaces of Holland Park are a short walk away.

Features

- One Double Bedroom
- Patio Garden
- Private Communal Gardens
- Separate Kitchen
- Wooden Flooring
- Prime Notting Hill Road

Elgin Crescent, London, W11



Total area (approx.): 85.2 sq. m (917.1 sq. ft)

Dexters

Westbourne Grove
120 Westbourne Grove
London
W11 2RR
Sales
020 7313 3600

Energy Rating: C. We aim to make our particulars both accurate and reliable. However they are not guaranteed; nor do they form part of an offer or contract. If you require clarification on any points then please contact us, especially if you're traveling some distance to view. Please note that appliances and heating systems have not been tested and therefore no warranties can be given as to their good working order.

 **RICS** | Regulated
Estate Agent
and Letting Agent

[dexters.co.uk](https://www.dexters.co.uk)