



Sussex Gardens, W2

£1,125,000

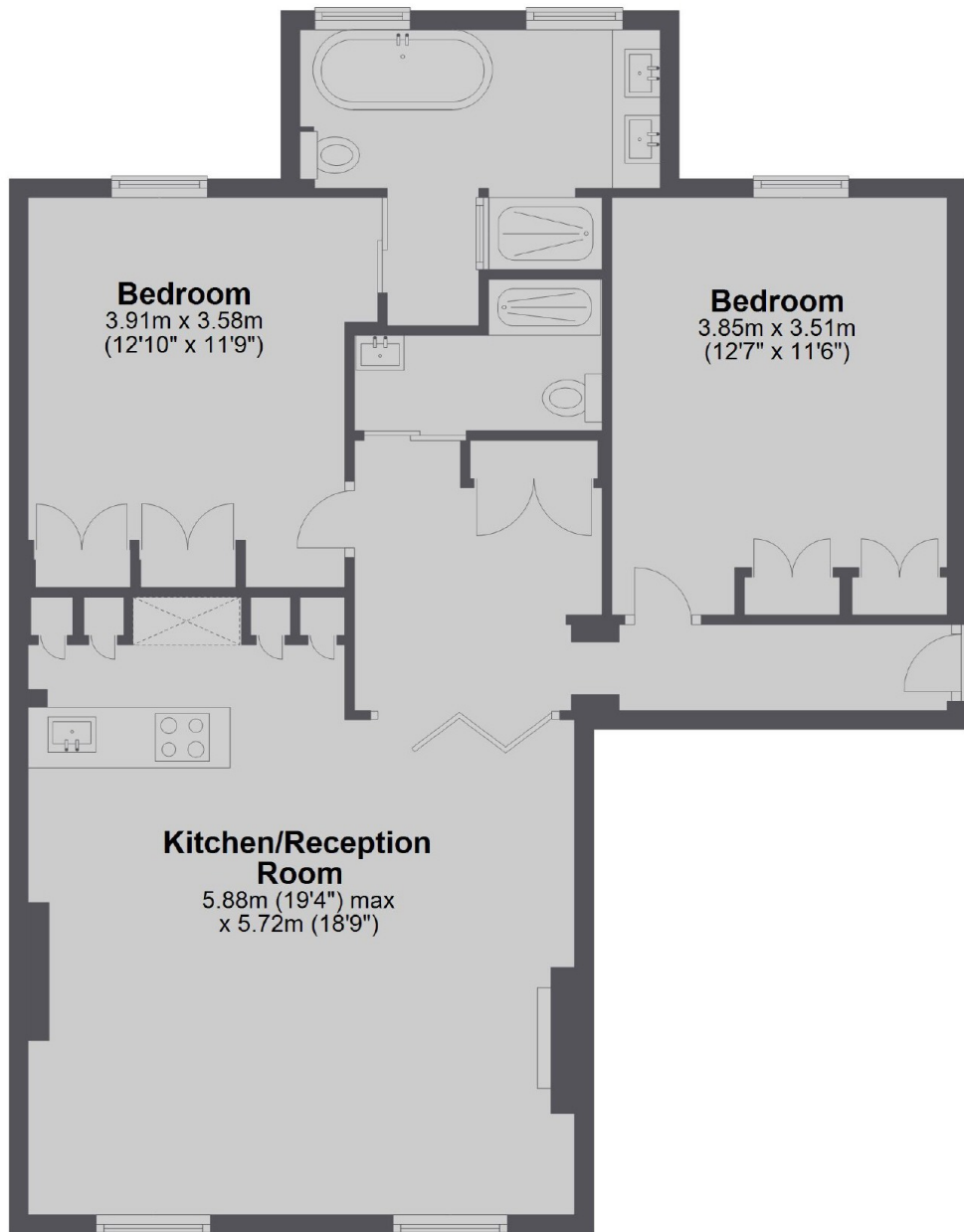
A high specification, spacious and lateral apartment in an early Victorian conversion with a lift. With two generous double bedrooms and two bathrooms and an open plan kitchen and reception room, this is an ideal property for those that love entertaining.

Paddington Mainline Station is nearby for District, Circle, Hammersmith and City and Bakerloo Lines as well as National Rail and the Heathrow Express and the green space of Hyde Park are a short walk away.

Features

- Two Bedrooms
- Two Bathrooms
- Open Plan Kitchen/Reception
- Lift
- Share of Freehold
- Close to Amenities

Sussex Gardens, London, W2



Total area: approx. 88.6 sq. metres (953.7 sq. feet)

Dexters

Westbourne Grove
120 Westbourne Grove
London
W11 2RR
Sales
020 7313 3600

Energy Rating: C. We aim to make our particulars both accurate and reliable. However they are not guaranteed; nor do they form part of an offer or contract. If you require clarification on any points then please contact us, especially if you're traveling some distance to view. Please note that appliances and heating systems have not been tested and therefore no warranties can be given as to their good working order.

 **RICS** | Regulated
Estate Agent
and Letting Agent

dexters.co.uk