



Russell Road, W14
£1,050,000

Dexters



Russell Road, W14

A spacious two bedroom two bathroom located on the top floor apartment in a Victorian terraced conversion. The property has been finished to high standard throughout, with wooden floors, a well fitted kitchen leading onto an open plan reception with room to dine.

The principal bedroom is spacious with fitted wardrobes maximising space. Both bedrooms benefit from the lovely views over looking the communal garden.

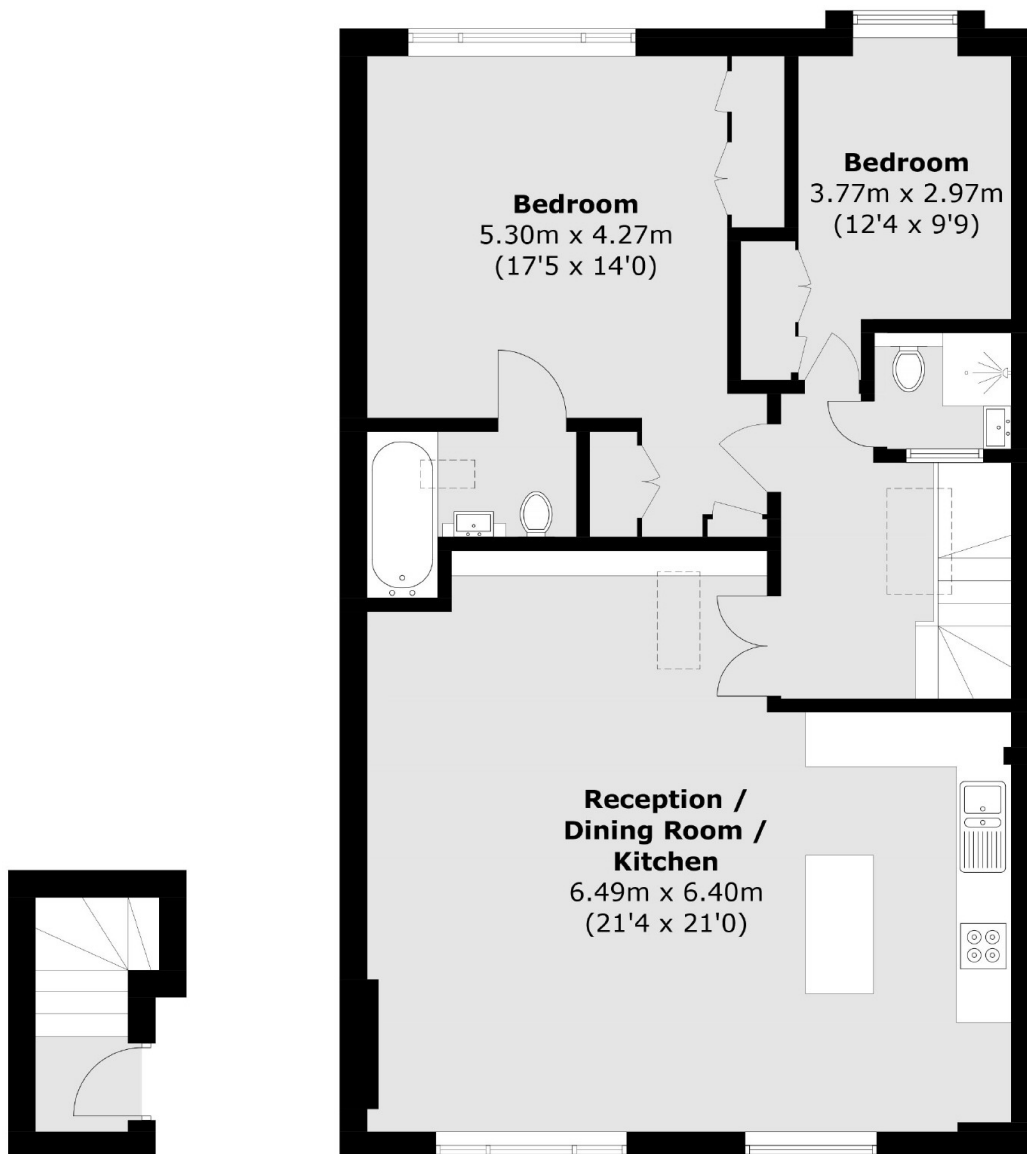
Russell Road is a sought-after street in West Kensington, offering easy access to a wide range of shops, restaurants, and transport links, including those along Kensington High Street, Westfield Shopping Centre, and Kensington Olympia. The property is also near to the green spaces of Holland Park and Brook Green.

Features

- Two Bedrooms
- Two Bathrooms
- Top Floor
- Share of Freehold
- Communal Garden



Russell Road,
London, W14



Total area (approx.): 87.1 sq. m (937.5 sq. ft)

Dexters

Westbourne Grove
120 Westbourne Grove
London
W11 2RR
Sales
020 7313 3600

Energy Rating: D. We aim to make our particulars both accurate and reliable. However they are not guaranteed; nor do they form part of an offer or contract. If you require clarification on any points then please contact us, especially if you're traveling some distance to view. Please note that appliances and heating systems have not been tested and therefore no warranties can be given as to their good working order.

RICS | Regulated
Estate Agent
and Letting Agent

dexters.co.uk