



Ladbroke Grove, W10

£650,000

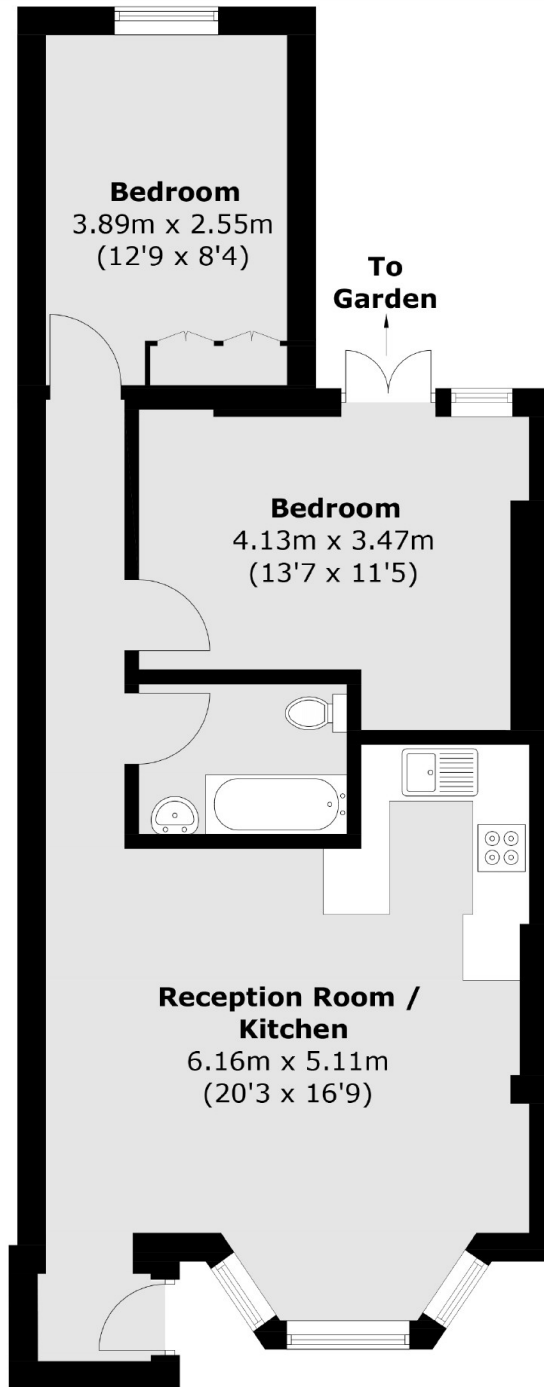
A well proportioned two bedroom flat located in a Victorian period conversion. The property offers a large open plan reception room/kitchen with room to dine as well as having a well maintained, spacious garden.

The property is ideally situated close to all the amenities, shops, bars and restaurants of Ladbroke Grove, Portobello Road and Westbourne Grove, while Notting Hill Gate is only a short distance away.

Features

- Two Bedroom
- Private Garden
- Own Front Door
- Close To Amenities
- Notting Hill

Ladbroke Grove,
London, W10



Total area (approx.): 58.2 sq. m (626.5 sq. ft)