



Kensington Gardens Square, W2

£950,000

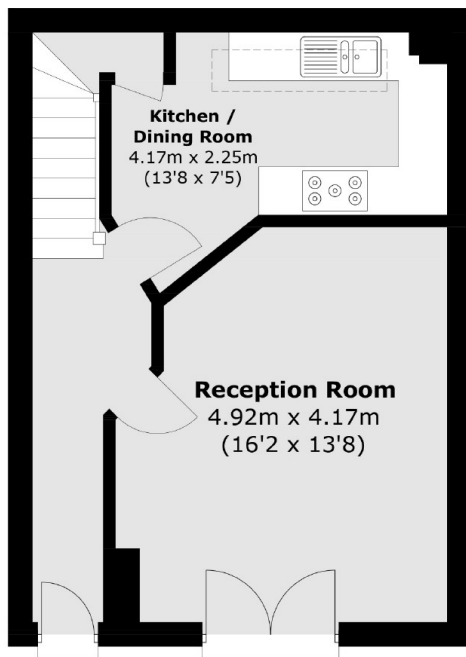
A two double bedroom mews house with secure underground parking in a prestigious, portered development. The property has a spacious reception with room to dine, a separate kitchen and an en suite in the principal bedroom and has a communal gym, pool, sauna, golf simulator and shared garden.

In a secluded mews between Westbourne Grove and Kensington Gardens Square, with plenty of local shops, restaurants and the 'Whiteley's' regeneration nearby. For green spaces Kensington Gardens is a short walk away.

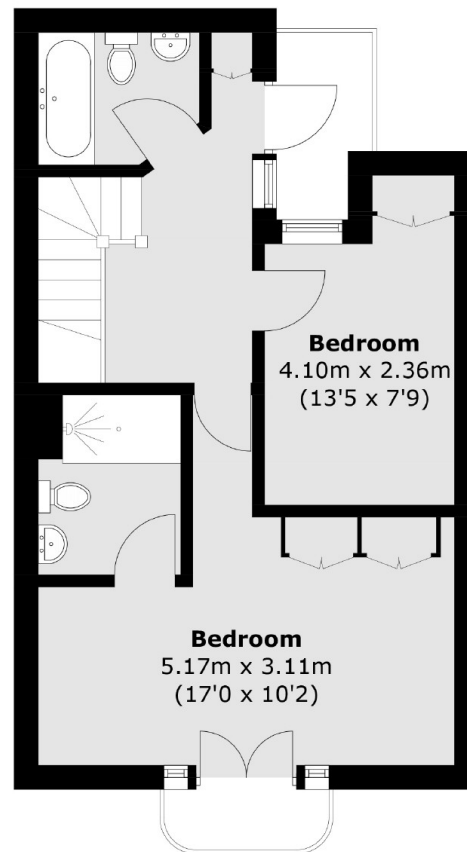
Features

- Two Bedrooms
- Two Bathrooms
- Secure Underground Parking
- Swimming Pool, Golf Simulator
- Gym and Sauna
- Porter

Kensington Gardens Square, London, W2



Ground Floor



First Floor

Total area (approx.): 79.9 sq. m (860.0 sq. ft)
External Area (approx.): 4.0 sq. m (43.0 sq. ft)