



Kensington Gardens Square, W2

£995,000

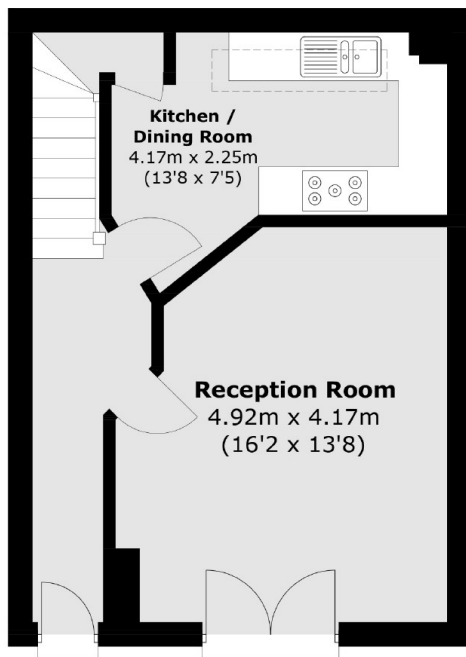
A two double bedroom mews house with secure underground parking in a prestigious, portered development. The property has a spacious reception with room to dine, a separate kitchen and an en suite in the principal bedroom and has a communal gym, pool, sauna, golf simulator and shared garden.

In a secluded mews between Westbourne Grove and Kensington Gardens Square, with plenty of local shops, restaurants and the 'Whiteley's' regeneration nearby. For green spaces Kensington Gardens is a short walk away.

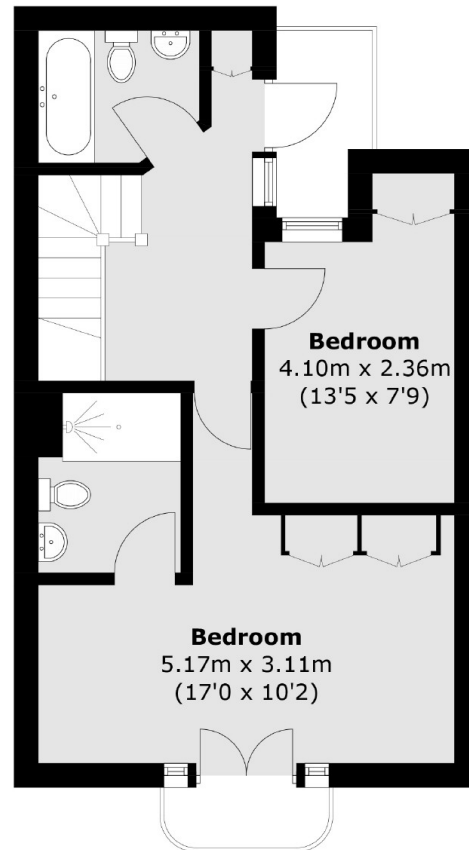
Features

Two Bedrooms
Two Bathrooms
Secure Underground Parking
Swimming Pool, Golf Simulator
Gym and Sauna
Porter

Kensington Gardens Square, London, W2



Ground Floor



First Floor

Total area (approx.): 79.9 sq. m (860.0 sq. ft)
External Area (approx.): 4.0 sq. m (43.0 sq. ft)