



Westbourne Grove, W2

£500,000

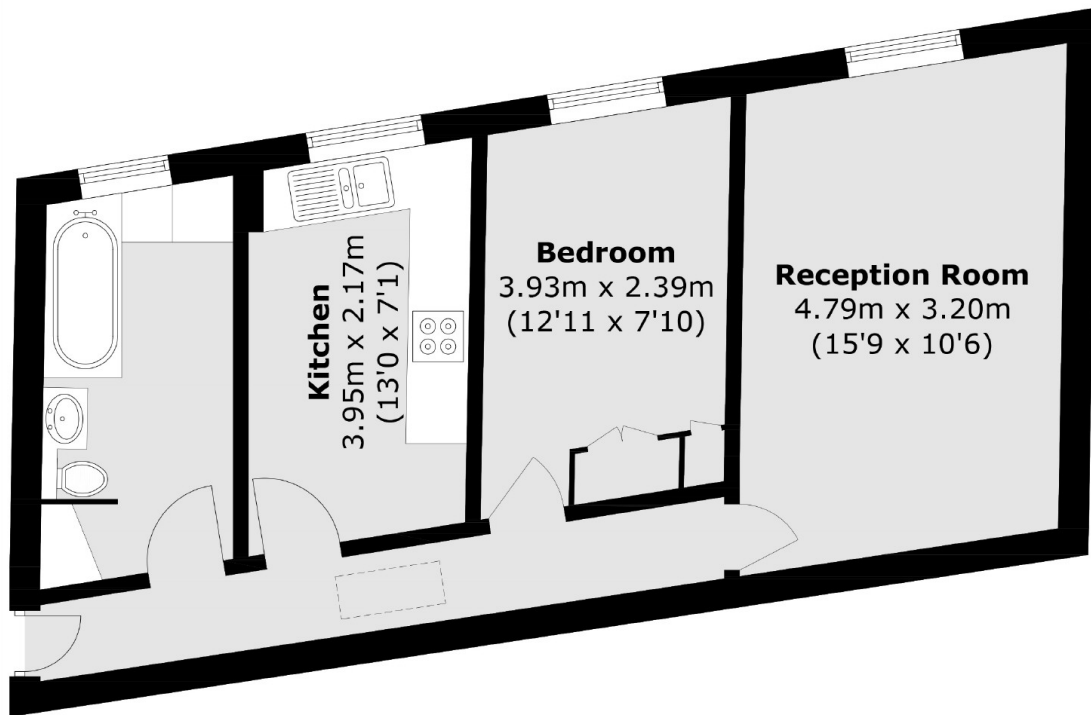
A well presented top floor flat, ideal for a first time buyer or an investment purchase. With a separate kitchen, large double bedroom, family bathroom and spacious reception with room to dine and a view over local gardens.

Westbourne Grove is in the heart of Notting Hill, with the green spaces of Hyde Park and plenty of chic restaurants and boutiques to choose from, on your doorstep. For commuting there's a wide choice of buses and underground nearby.

Features

- One Double Bedroom
- Top Floor Flat
- Long Leasehold
- Room to Dine
- Separate Kitchen
- Prime Location

Westbourne Grove, London, W2



Total area (approx.): 47.6 sq. m (512.4 sq. ft)

Dexters

Westbourne Grove
120 Westbourne Grove
London
W11 2RR
Sales
020 7313 3600

Energy Rating: C. We aim to make our particulars both accurate and reliable. However they are not guaranteed; nor do they form part of an offer or contract. If you require clarification on any points then please contact us, especially if you're traveling some distance to view. Please note that appliances and heating systems have not been tested and therefore no warranties can be given as to their good working order.

 **RICS** | Regulated
Estate Agent
and Letting Agent

[dexters.co.uk](https://www.dexters.co.uk)