

## Talbot Road, W2

£725,000

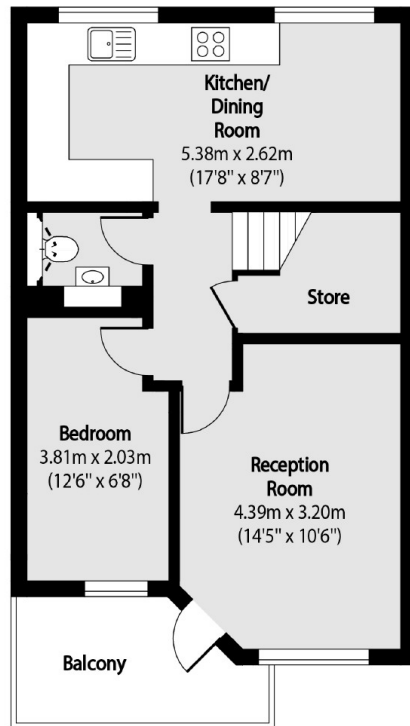
A spacious split level three bedroom apartment located in the heart of Notting Hill. The purpose built block with lift access has a reception room which leads onto a balcony, a large separate kitchen with room to dine and three double bedrooms with plenty of storage throughout.

Ideally located on Talbot Road close to the boutique shops, cafés and restaurants of Westbourne Grove and Ledbury Road. There are transport links close by on Notting Hill Gate providing easy access to the City.

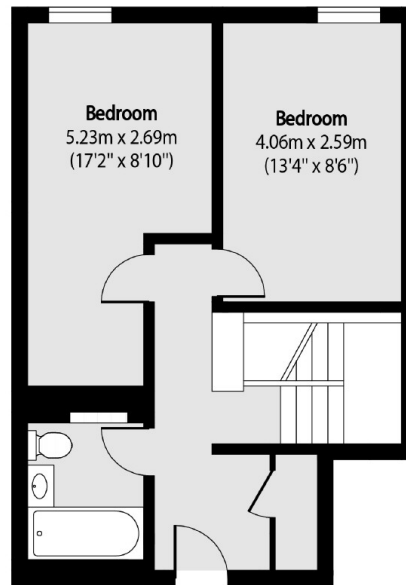
### Features

- Three Double Bedrooms
- Balcony
- Split Level
- Separate Kitchen
- Lift
- Notting Hill

# Talbot Road, London, W2



Fourth Floor



Fifth Floor

Total area (approx): 86.86 sq m (935 sq. ft)

Balcony total area (approx): 5.75 sq m (62 sq. ft)