



## Ladbroke Grove, W10

### £450,000

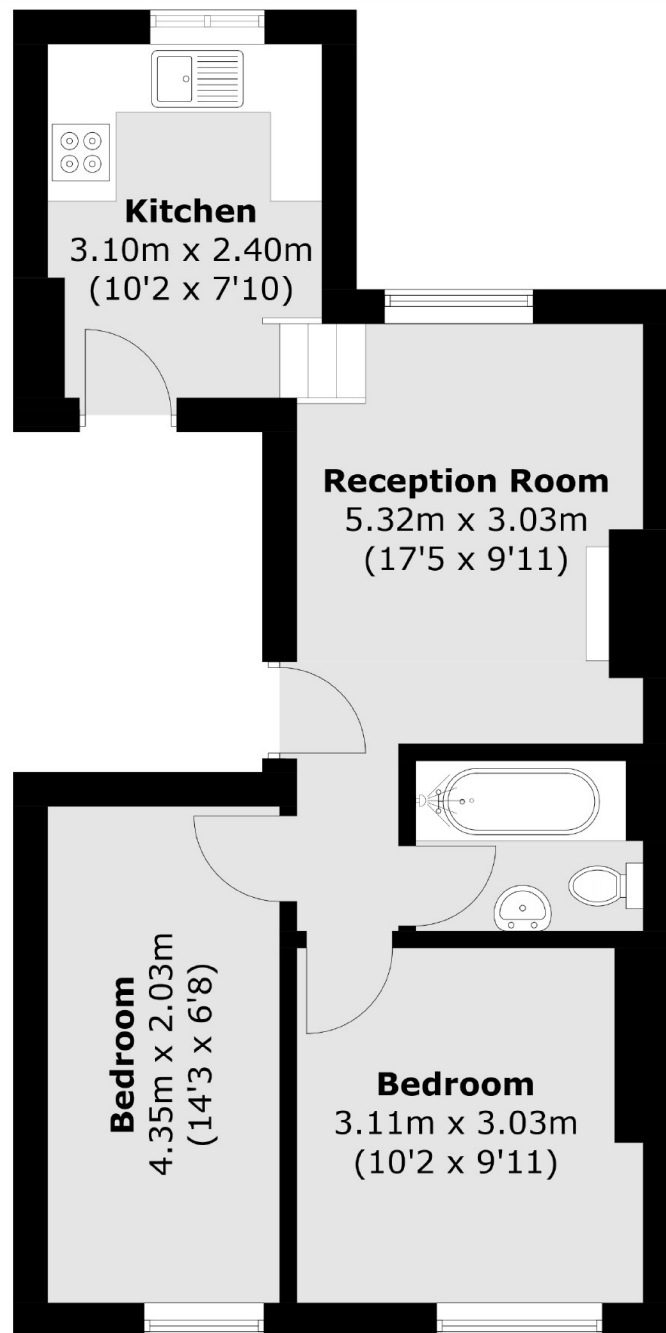
A newly decorated two bedroom apartment located on the first floor in a period conversion. The property has a reception room with high ceilings and a feature fireplace, a separate kitchen, and a newly fitted bathroom.

The property is ideally situated close to all the amenities, shops, bars and restaurants of Ladbroke Grove, Portobello Road and Westbourne Grove, while Notting Hill Gate is only a short distance away.

### Features

Two Bedroom  
First Floor Flat  
Separate Kitchen  
High Ceilings  
Notting Hill

# Ladbroke Grove, London, W10



## First Floor

Total area (approx.): 43.0 sq. m (462.8 sq. ft)

# Dexters

Westbourne Grove  
120 Westbourne Grove  
London  
W11 2RR  
Sales  
020 7313 3600

Energy Rating: C. We aim to make our particulars both accurate and reliable. However they are not guaranteed; nor do they form part of an offer or contract. If you require clarification on any points then please contact us, especially if you're traveling some distance to view. Please note that appliances and heating systems have not been tested and therefore no warranties can be given as to their good working order.

 **RICS** | Regulated  
Estate Agent  
and Letting Agent

[dexters.co.uk](https://www.dexters.co.uk)