



Ladbroke Grove, W10

£475,000

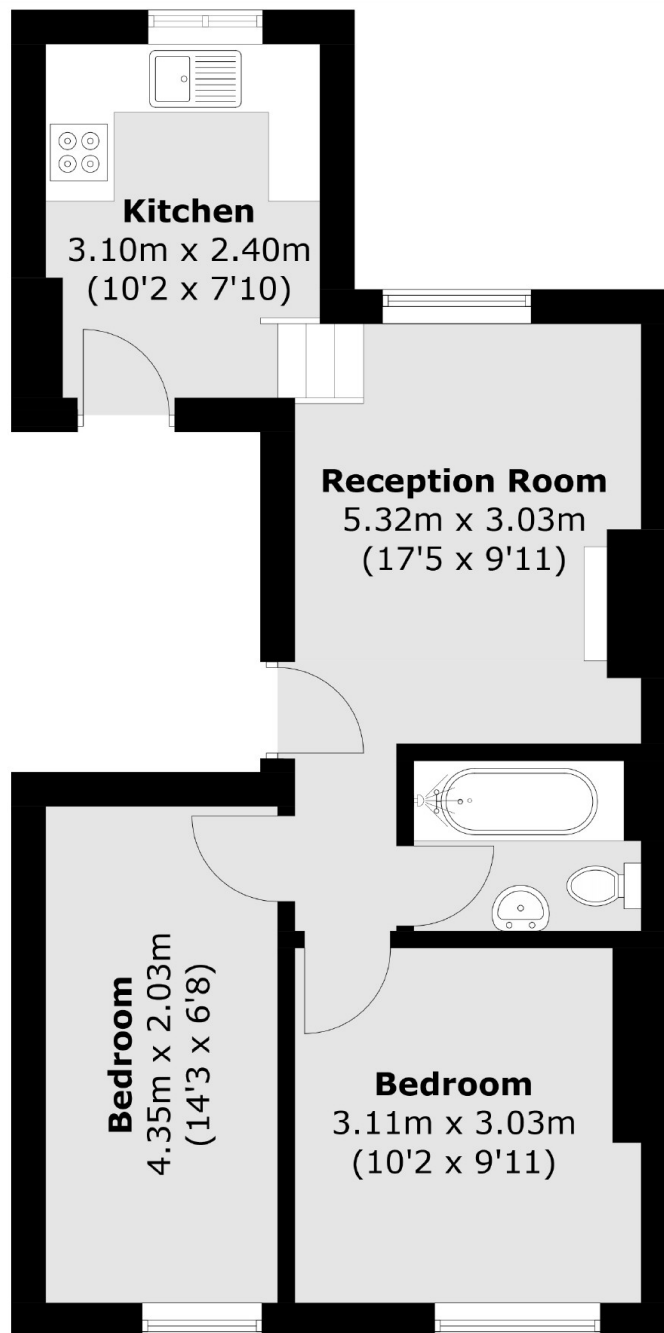
A newly decorated two bedroom apartment located on the first floor in a period conversion. The property has a reception room with high ceilings and a feature fireplace, a separate kitchen, and a newly fitted bathroom.

The property is ideally situated close to all the amenities, shops, bars and restaurants of Ladbroke Grove, Portobello Road and Westbourne Grove, while Notting Hill Gate is only a short distance away.

Features

Two Bedroom
First Floor Flat
Separate Kitchen
High Ceilings
Notting Hill

Ladbroke Grove,
London, W10



First Floor

Total area (approx.): 43.0 sq. m (462.8 sq. ft)