



## Chepstow Road, W2

£599,000

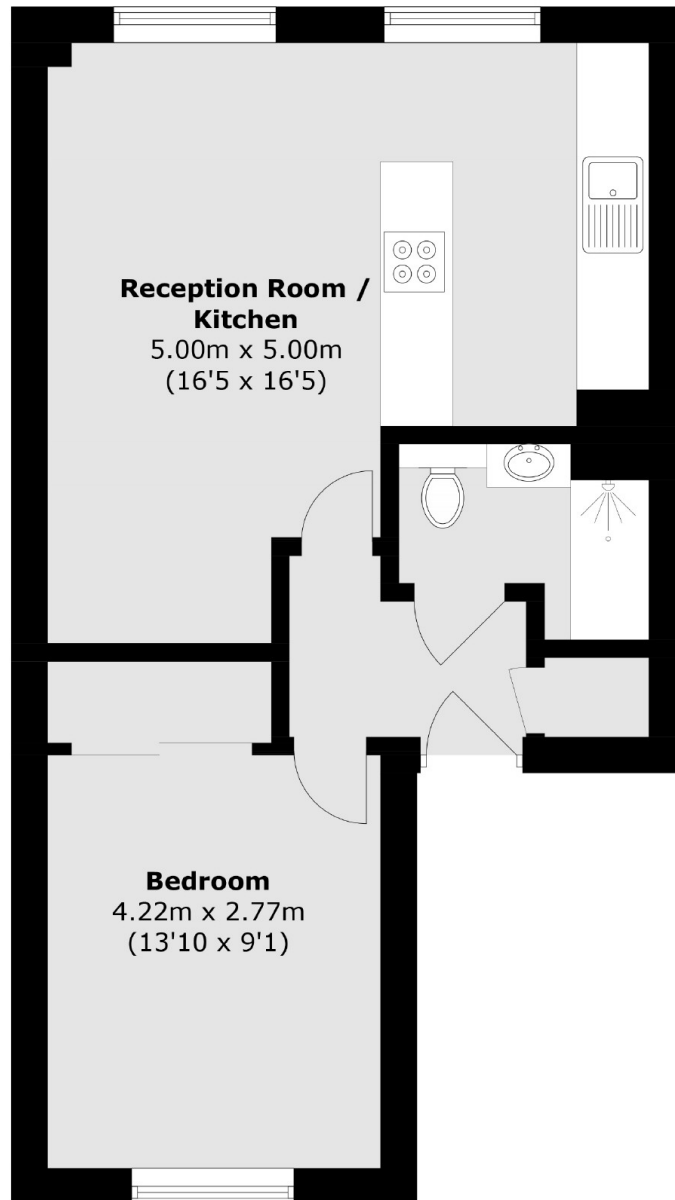
A newly refurbished one bedroom apartment in a Victorian period conversion. The open plan reception room has a high specification kitchen and Herringbone flooring and the bedroom has in built wardrobes.

The flat is ideally located for the varied amenities of Notting Hill Gate, Queensway, Baywater and Portobello Road Market and is within easy walking distance of a number of underground stations.

### Features

One Bedroom  
Open Plan  
Newly Refurbished  
High Specification  
Victorian Conversion  
Notting Hill  
Digitally Staged

Chepstow Road,  
London, W2



Total area (approx.): 39 sq. m (419.8 sq. ft)

**Dexters**

Westbourne Grove  
120 Westbourne Grove  
London  
W11 2RR  
Sales  
020 7313 3600

Energy Rating: C. We aim to make our particulars both accurate and reliable. However they are not guaranteed; nor do they form part of an offer or contract. If you require clarification on any points then please contact us, especially if you're traveling some distance to view. Please note that appliances and heating systems have not been tested and therefore no warranties can be given as to their good working order.

 **RICS** | Regulated  
Estate Agent  
and Letting Agent

[dexters.co.uk](https://www.dexters.co.uk)