



## Tavistock Road, W11

### £675,000

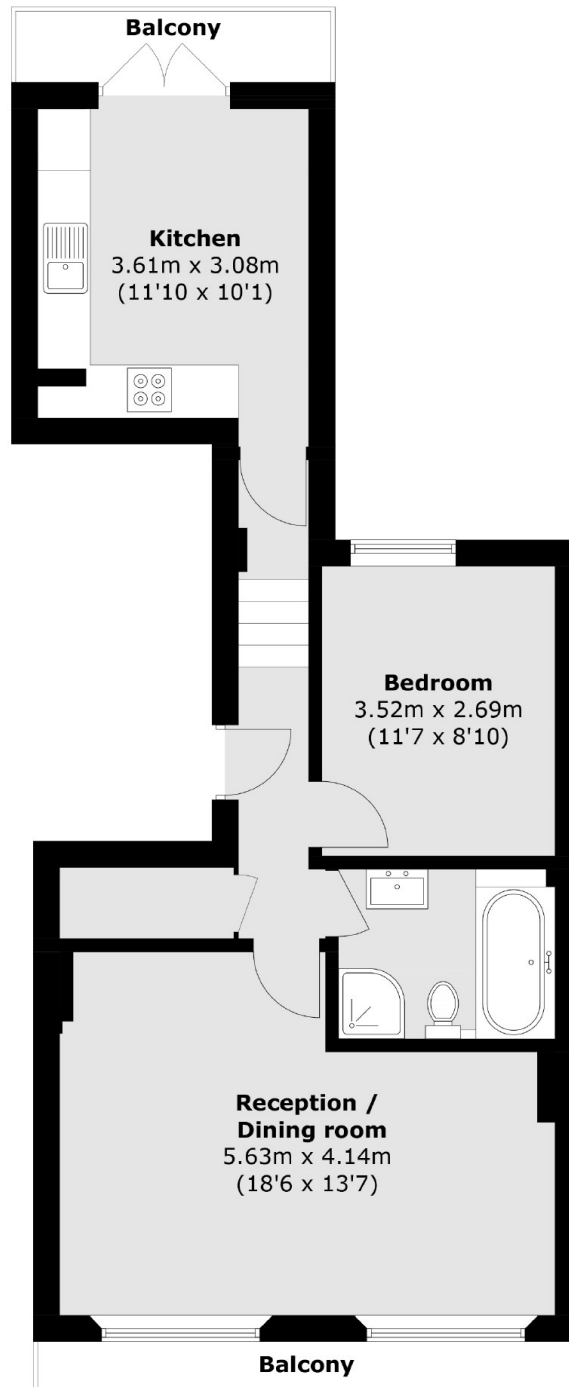
A spacious south facing one bedroom apartment situated on the first floor of a Victorian period conversion in Notting Hill. The well proportioned living room has room to dine and there is a separate kitchen leading out to a private balcony. The property features high ceilings, original features throughout and two balconies.

Tavistock Road in Notting Hill is ideal for the bars and restaurants of Portobello Road, Westbourne Grove, and Notting Hill Gate. The green open spaces of Holland Park and Kensington Gardens are also both easily accessible and is only a short walk to Westbourne Park Underground.

### Features

- One Double Bedroom
- First Floor Flat
- Share Of Freehold
- Shared Bike Shed
- Notting Hill

Tavistock Road,  
London, W11



Total area (approx.): 53.6 sq. m (576.9 sq. ft)  
Balcony : 6.3 sq. m (67.8 sq. ft)

**Dexters**

Westbourne Grove  
120 Westbourne Grove  
London  
W11 2RR  
Sales  
020 7313 3600

Energy Rating: C. We aim to make our particulars both accurate and reliable. However they are not guaranteed; nor do they form part of an offer or contract. If you require clarification on any points then please contact us, especially if you're traveling some distance to view. Please note that appliances and heating systems have not been tested and therefore no warranties can be given as to their good working order.

 **RICS** | Regulated  
Estate Agent  
and Letting Agent

[dexters.co.uk](https://www.dexters.co.uk)