



Princess Louise Walk, W10

£162,000

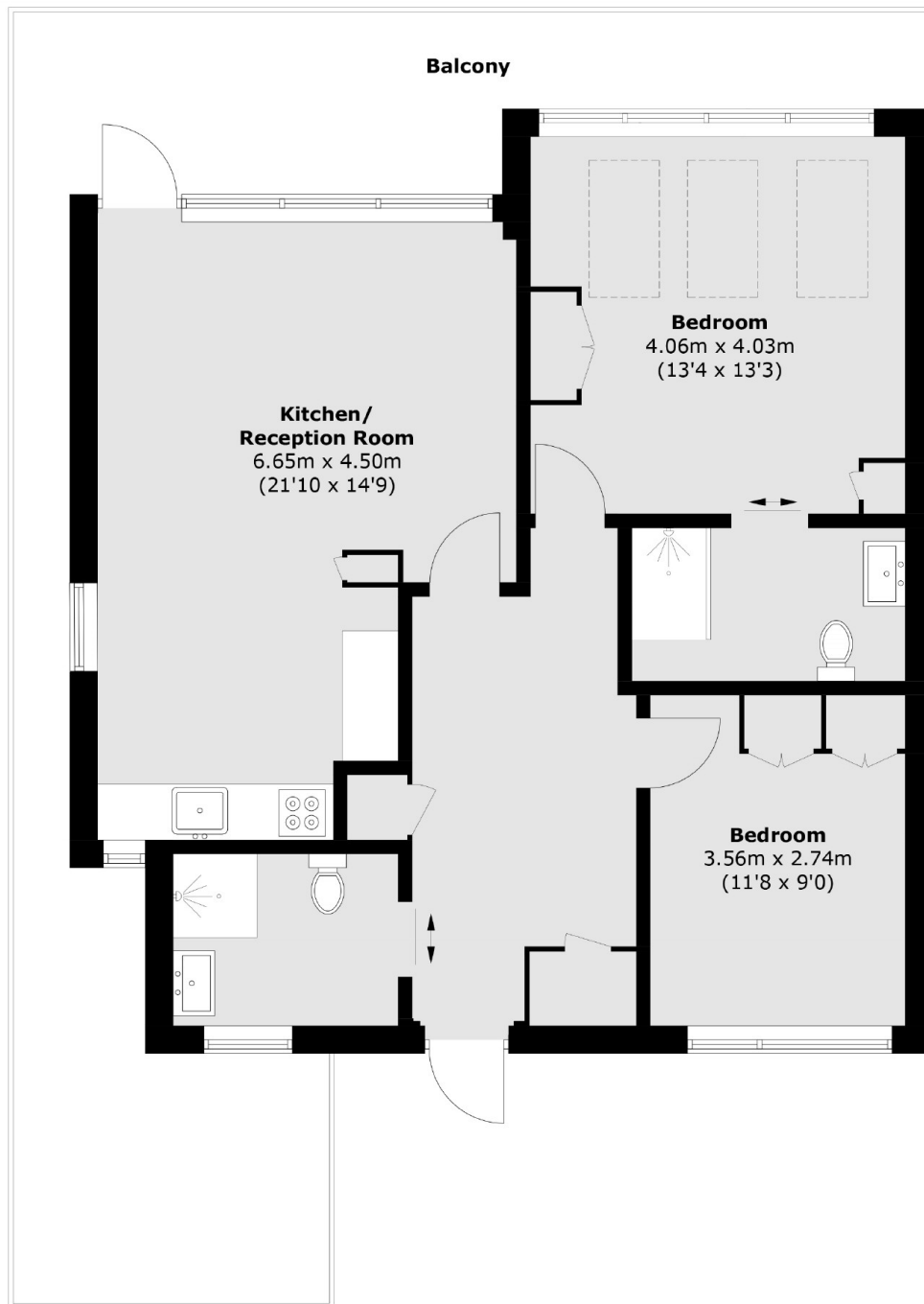
25% SHARED OWNERSHIP. A two double bedroom apartment on the top floor (with lift) of a purpose built building with allocated and secure off street parking. The open plan kitchen and reception leads to the large private balcony and there are two bathrooms (one en suite) and good natural light throughout.

Princess Louise Walk is leafy residential street close to the local shops and restaurants of Ladbroke Grove and Golborne Road. The flat overlooks Kensington Memorial Park, is well positioned for access to Ladbroke Grove and White City tube station and the green spaces of Wormwood Scrubs.

Features

- Shared Ownership
- Two Double Bedrooms
- Two Bathrooms
- Large Balcony
- Off Street Parking
- Two Lifts

Princess Louise Walk, London, W10



Total area (approx.): 77.4 sq. m (833.1 sq. ft)
Balcony: 31.5 sq. m (339.0 sq. ft)

Dexters

Westbourne Grove
120 Westbourne Grove
London
W11 2RR
Sales
020 7313 3600

Energy Rating: B. We aim to make our particulars both accurate and reliable. However they are not guaranteed; nor do they form part of an offer or contract. If you require clarification on any points then please contact us, especially if you're traveling some distance to view. Please note that appliances and heating systems have not been tested and therefore no warranties can be given as to their good working order.

 **RICS** | Regulated
Estate Agent
and Letting Agent

[dexters.co.uk](https://www.dexters.co.uk)