



Artesian Road, W2
£1,600,000

Dexters



Artesian Road, W2

A two bedroom penthouse with lift and 24 hour porter, in a purpose built gated development. With high finishes throughout, a secure underground parking spot, and communal gardens, this property is an ideal home or pied a terre.

The property has a spacious open plan reception with vaulted ceilings, perfect for entertaining. The Bulthaup kitchen has a breakfast bar and high end appliances, room to dine, and access to two of the balconies.

The two double bedrooms have their own balcony, with the principal bedroom having built in storage, and en suite.

Situated on the top floor and with large windows throughout, the property is flooded with light and there's spectacular views adding to the penthouse living.

The Westbourne Development is ideally located within the heart of Notting Hill with the local shops and restaurants of Westbourne Grove and Portobello Road on the doorstep.

Features

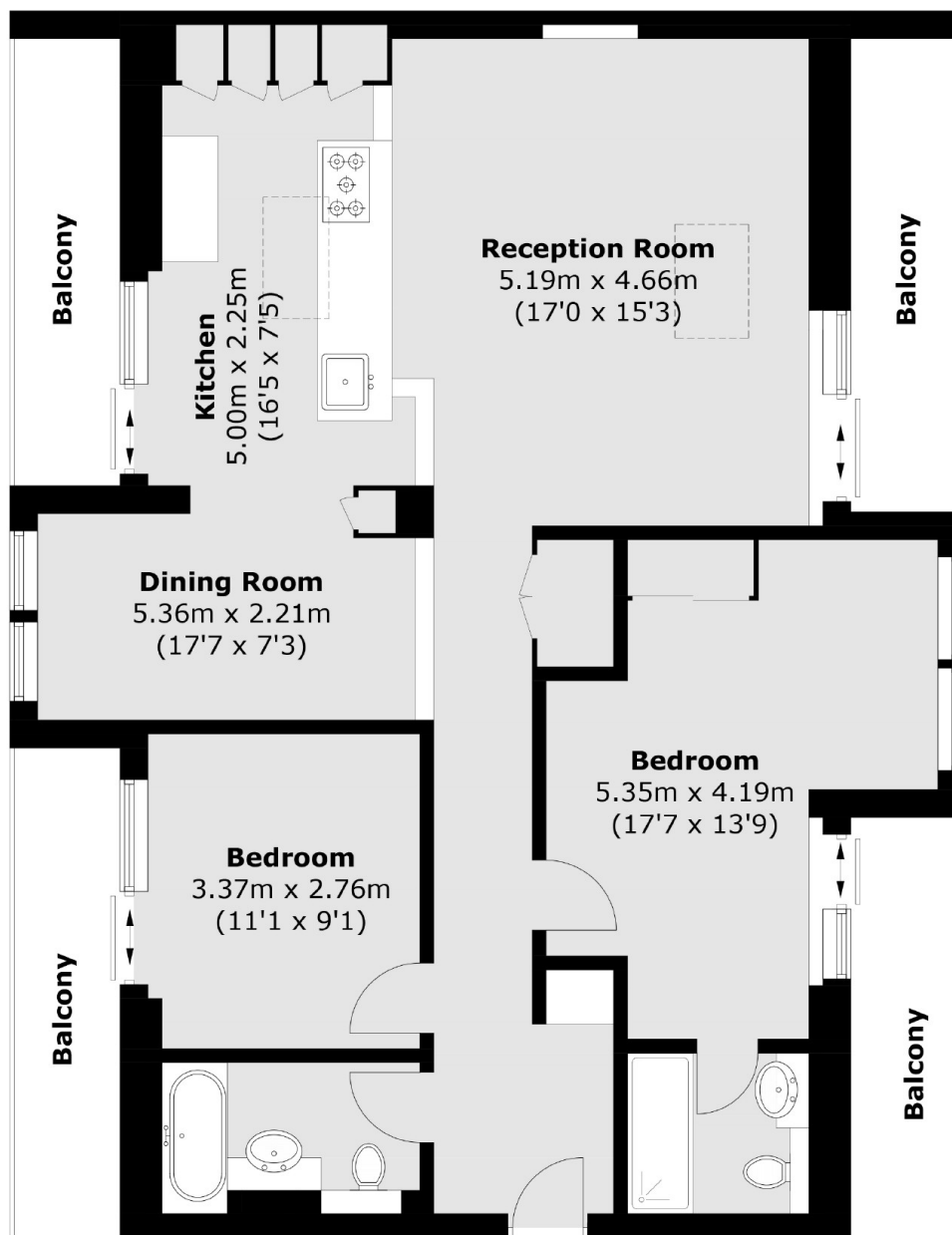
- Penthouse
- Vaulted Ceilings
- Four Balconies
- Underground Parking Space
- Communal Garden
- Porter







Artesian Road, London, W2



Total area (approx.): 98.0 sq. m (1,054.9 sq. ft)
Balcony area: 22.6 sq. m (243.3 sq. ft)

Dexters

Westbourne Grove
120 Westbourne Grove
London
W11 2RR
Sales
020 7313 3600

Energy Rating: C. We aim to make our particulars both accurate and reliable. However they are not guaranteed; nor do they form part of an offer or contract. If you require clarification on any points then please contact us, especially if you're traveling some distance to view. Please note that appliances and heating systems have not been tested and therefore no warranties can be given as to their good working order.

 **RICS** | Regulated
Estate Agent
and Letting Agent

[dexters.co.uk](https://www.dexters.co.uk)