



Ladbroke Grove, W11

£350,000

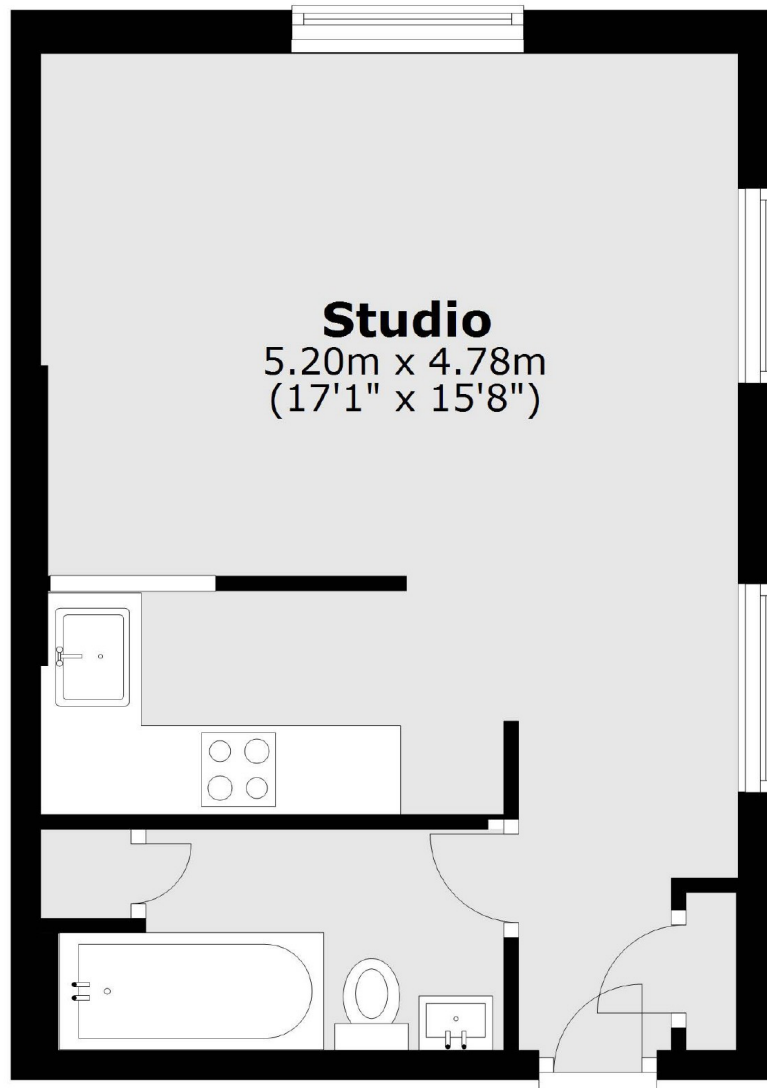
This well presented upper floor studio flat benefits from natural light throughout, complemented by the double aspect windows which include westerly views. The property offers a large studio space and separate kitchen in the heart of Notting Hill.

The prime location is moments from the shops and amenities of Portobello Road, with easy access to the Underground at Ladbroke Grove and a short walk from Notting Hill Gate.

Features

- Share of Freehold
- Large Studio Flat
- High Ceilings
- Separate Kitchen
- Double Aspect
- Close To Amenities

Ladbroke Grove,
London, W11



Total area: approx. 32.8 sq. metres (353.0 sq. feet)

Dexters

Westbourne Grove
120 Westbourne Grove
London
W11 2RR
Sales
020 7313 3600

Energy Rating: E. We aim to make our particulars both accurate and reliable. However they are not guaranteed; nor do they form part of an offer or contract. If you require clarification on any points then please contact us, especially if you're traveling some distance to view. Please note that appliances and heating systems have not been tested and therefore no warranties can be given as to their good working order.

 **RICS** | Regulated
Estate Agent
and Letting Agent

dexters.co.uk