



## Queensborough Mews, W2

£850,000

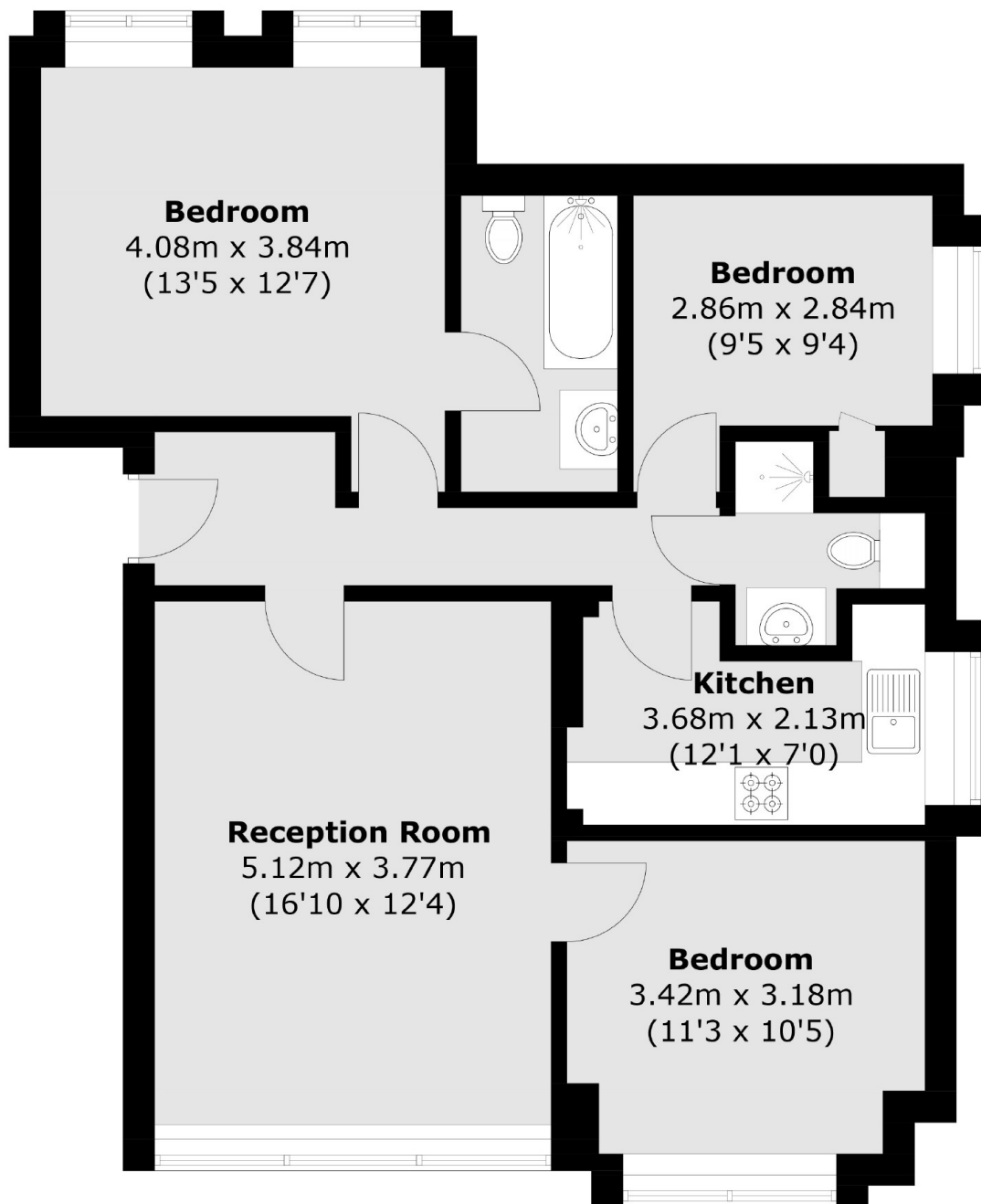
A three double bedroom, lateral apartment in a purpose built development close to Hyde Park. With a separate kitchen and reception room for entertaining, this will be an ideal home or investment. Offers In Excess of £850,000

Joanne House is on a tree lined, residential road opposite the green spaces of Hyde Park. Bayswater, Queensway and Lancaster Gate undergrounds are close by, as is Paddington station offering convenient access across and out of London.

### Features

OIEO £850,000  
Three Bedrooms  
Separate Kitchen  
Purpose Built  
Close To Amenities  
Hyde Park

# Queensborough Mews, London, W2



Total area (approx.): 74.8 sq. m (805.1 sq. ft)

## Dexters

Westbourne Grove  
120 Westbourne Grove  
London  
W11 2RR  
Sales  
020 7313 3600

Energy Rating: C. We aim to make our particulars both accurate and reliable. However they are not guaranteed; nor do they form part of an offer or contract. If you require clarification on any points then please contact us, especially if you're traveling some distance to view. Please note that appliances and heating systems have not been tested and therefore no warranties can be given as to their good working order.

 **RICS** | Regulated  
Estate Agent  
and Letting Agent

[dexters.co.uk](http://dexters.co.uk)