



Great Western Road, W11 £500,000

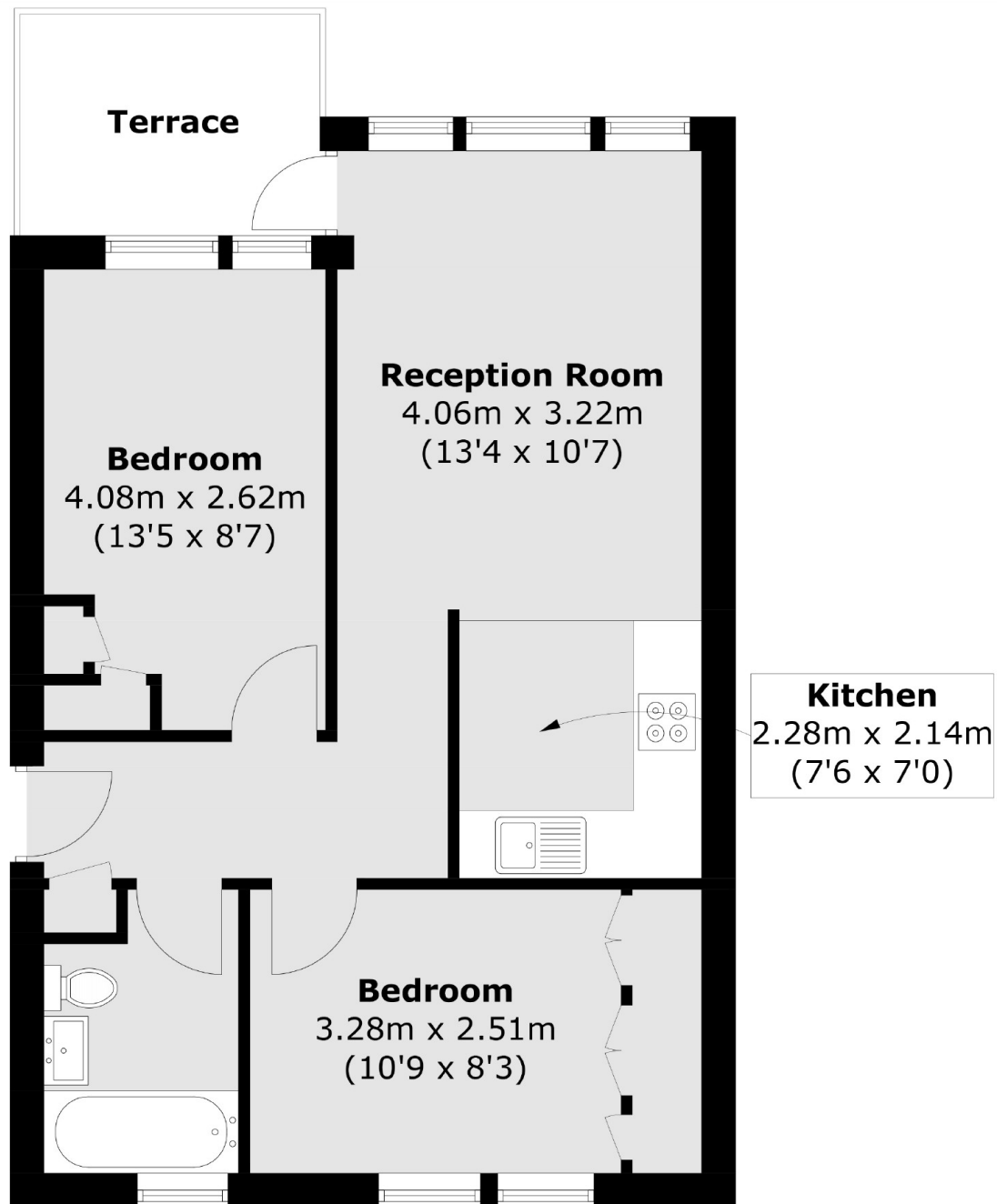
A spacious two double bedroom apartment in a purpose built development . There is an open plan reception room, with a recently fitted modern kitchen and access to the private South West facing balcony, plus a newly refurbished family bathroom.

Great Western Road is ideally located with Westbourne Park (Circle and Hammersmith & City) a short walk away and plenty of local pubs bars and restaurants on Portobello Road and Westbourne Grove.

Features

- Two Double Bedrooms
- Open Plan
- Private Balcony
- Purpose Built
- Great Transport Links
- Notting Hill

Great Western Road,
London, W11



Total area (approx.): 51.2 sq. m (550.6 sq. ft)
Terrace : 5.2 sq. m (55.9 sq. ft)