



## Maida Avenue, W2

£750,000

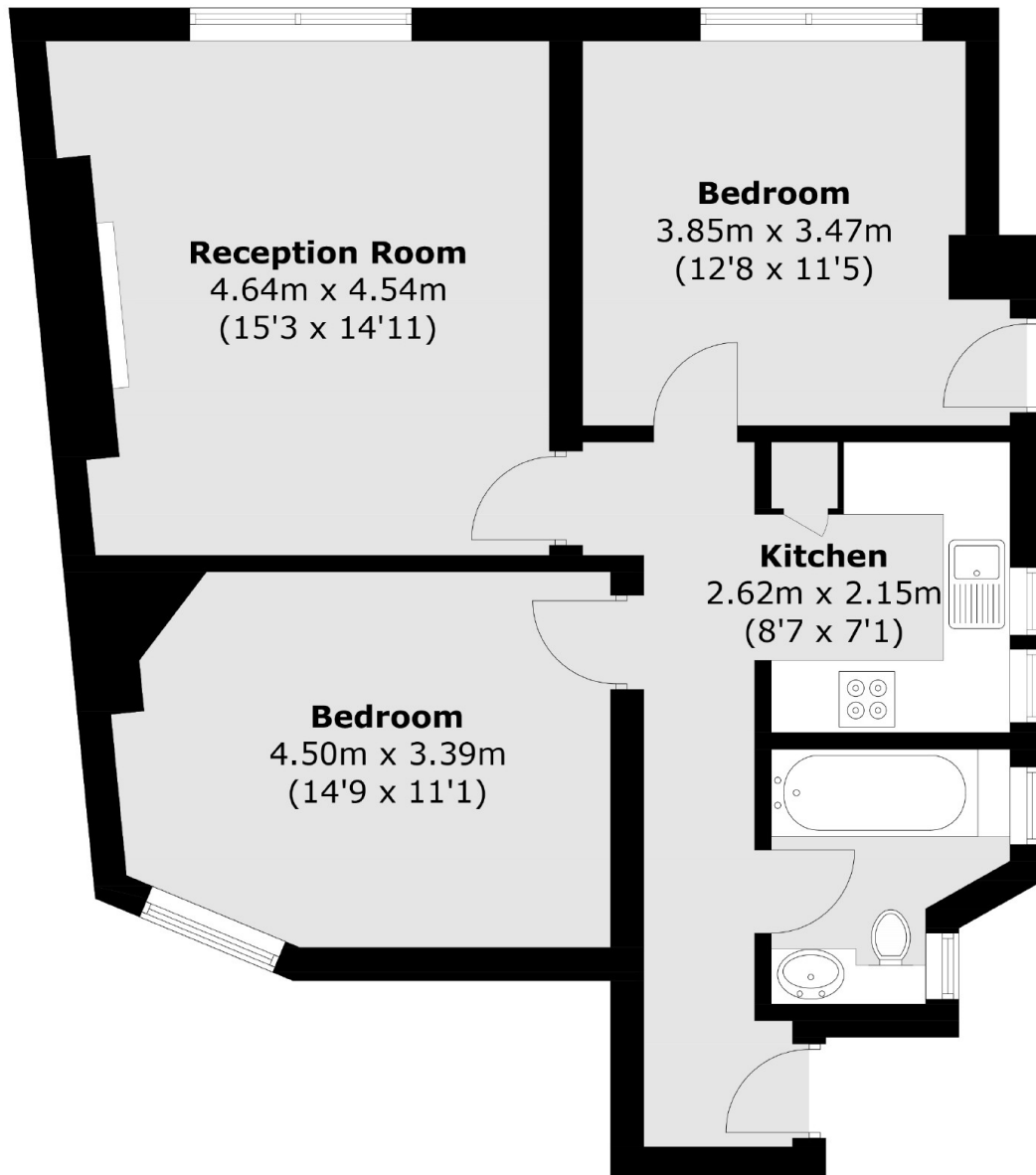
A lateral two bedroom apartment in a purpose built mansion block (with a lift). The property has a well sized reception with feature fireplace and wooden flooring, a separate fitted kitchen, modern bathroom and access to the communal gardens.

Maida Avenue is next to the Grand Union Canal in the heart of Little Venice. Near Paddington Basin with its numerous facilities including the Heathrow Express and National Rail Station. Nearest underground stations include Royal Oak and Warwick Avenue.

### Features

- Two Double Bedrooms
- Lift
- Wooden Floors
- Separate Kitchen
- Communal Gardens
- Little Venice
- Digitally Staged

Maida Avenue,  
London, W2



Total area (approx.): 69.3 sq. m (745.9 sq. ft)

**Dexters**

Westbourne Grove  
120 Westbourne Grove  
London  
W11 2RR  
Sales  
020 7313 3600

Energy Rating: E. We aim to make our particulars both accurate and reliable. However they are not guaranteed; nor do they form part of an offer or contract. If you require clarification on any points then please contact us, especially if you're traveling some distance to view. Please note that appliances and heating systems have not been tested and therefore no warranties can be given as to their good working order.

 **RICS** | Regulated  
Estate Agent  
and Letting Agent

[dexters.co.uk](http://dexters.co.uk)