



Portland Road, W11
£3,500,000

Dexters



Portland Road, W11

A fabulous freehold house measuring almost 2,000 Sq.Ft with lots of entertaining space and ideal for a growing family looking to create a long term home.

Entered on the ground floor into the double reception room, with wooden floors, a feature fire place and leads to the sun room to the rear. Downstairs, the well equipped kitchen and separate dining room lead to the private South West facing patio garden, creating an ideal entertaining area.

On the first floor, there's a principal bedroom leading to a spacious en suite bathroom and a separate study. On the top floor, there's three further bedrooms, a family bathroom and access to a roof terrace, with non-permanent access.

Although the house is presented in good order with period features throughout, this will make an ideal project for those looking to put their own stamp on a property.

Portland Road is a tree lined, residential road in the heart of prime Holland Park, a short walk to Holland Park Underground, the green spaces of Holland Park and plenty of local boutiques and restaurants.

Features

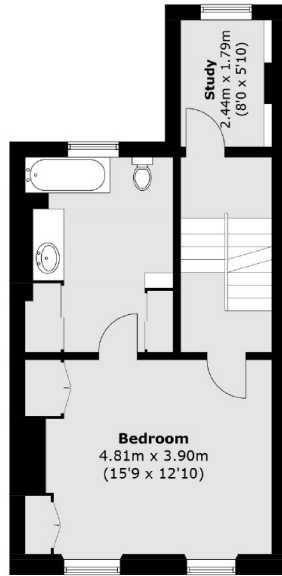
- Family Freehold House
- Patio Garden & Roof Terrace
- Four / Five Bedrooms
- Double Reception
- Kitchen and Dining Room
- RBKC



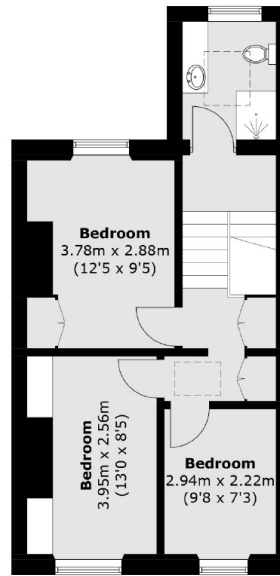




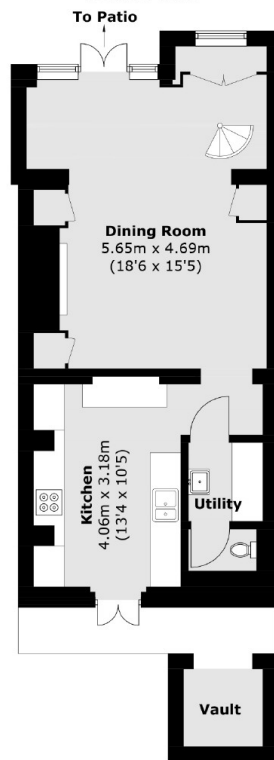
Portland Road,
London, W11



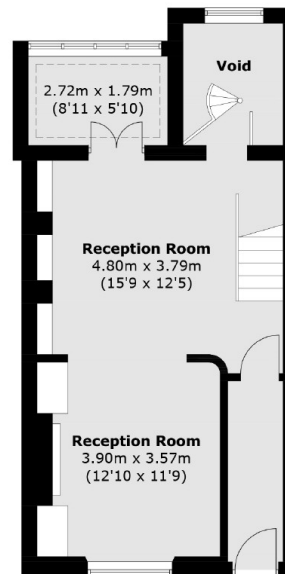
First Floor



Second Floor



Lower Ground Floor



Ground Floor

Total area (approx.): 181.0 sq. m (1,948.2 sq. ft)

Vault area (approx.): 2.3 sq. m (24.7 sq. ft)