

Moscow Road, W2

£1,350,000

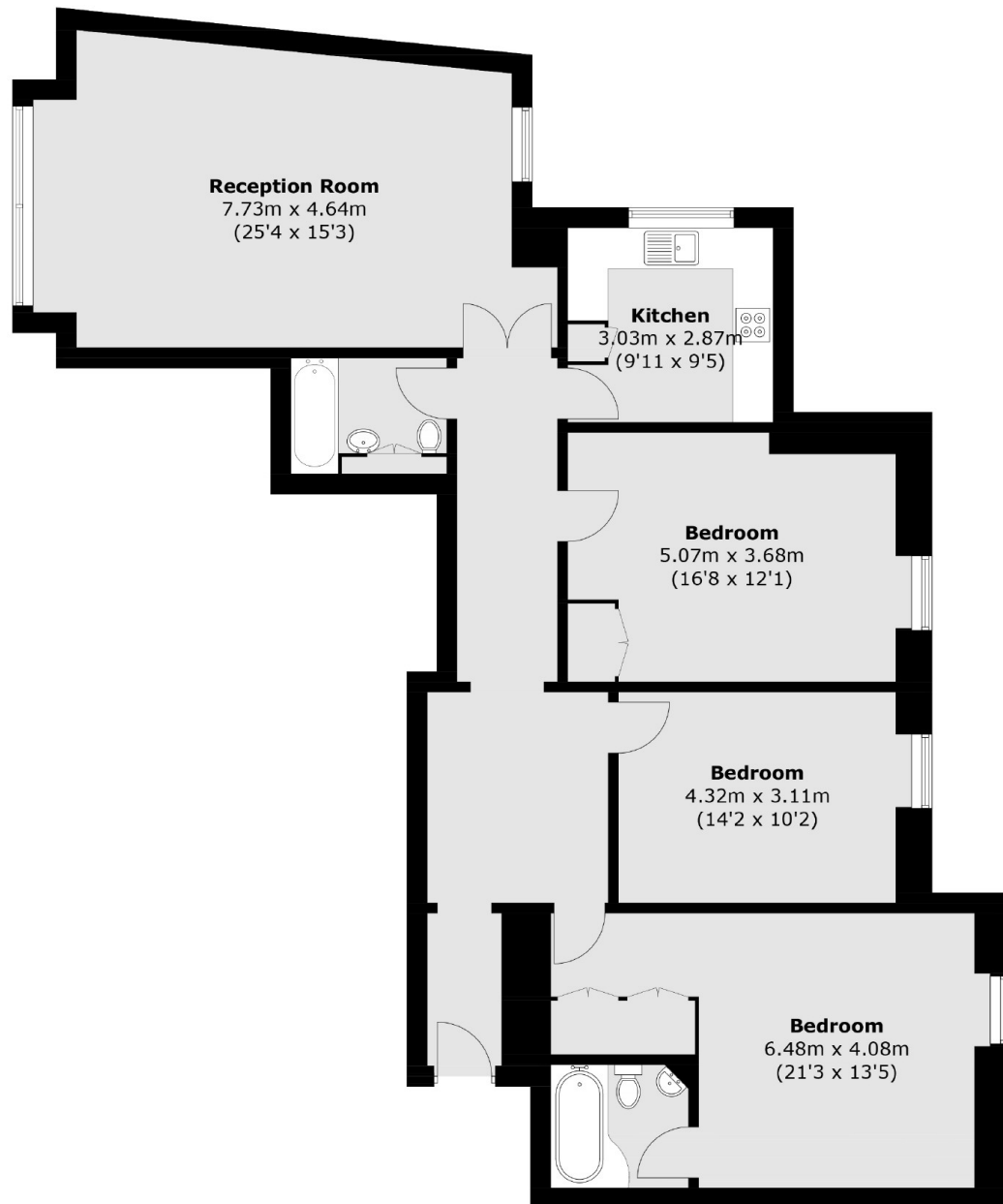
A lateral three bedroom apartment arranged over the fifth (top) floor of an attractive building with recently refurbished communal areas, porter and lift. The property is offered on a long lease and has plenty of light throughout.

Moscow Road is close to the amenities on Notting Hill Gate, Westbourne Grove and Queensway. Queensway (Central line) and Bayswater (Circle Line) are within close proximity, as are the green space of Hyde Park and the Whiteleys regeneration project.

Features

- Top Floor Apartment
- Three Double Bedrooms
- Two Bathrooms
- Large Separate Kitchen
- On Site Porter
- Lift
- Digitally Staged

Moscow Road,
London, W2



Fifth Floor

Total area (approx.): 126.7 sq. m (1,363.8 sq. ft)

Dexters

Westbourne Grove
120 Westbourne Grove
London
W11 2RR
Sales
020 7313 3600

Energy Rating: D. We aim to make our particulars both accurate and reliable. However they are not guaranteed; nor do they form part of an offer or contract. If you require clarification on any points then please contact us, especially if you're traveling some distance to view. Please note that appliances and heating systems have not been tested and therefore no warranties can be given as to their good working order.

RICS | Regulated
Estate Agent
and Letting Agent

dexters.co.uk