



## Sussex Place, W2

£1,400,000

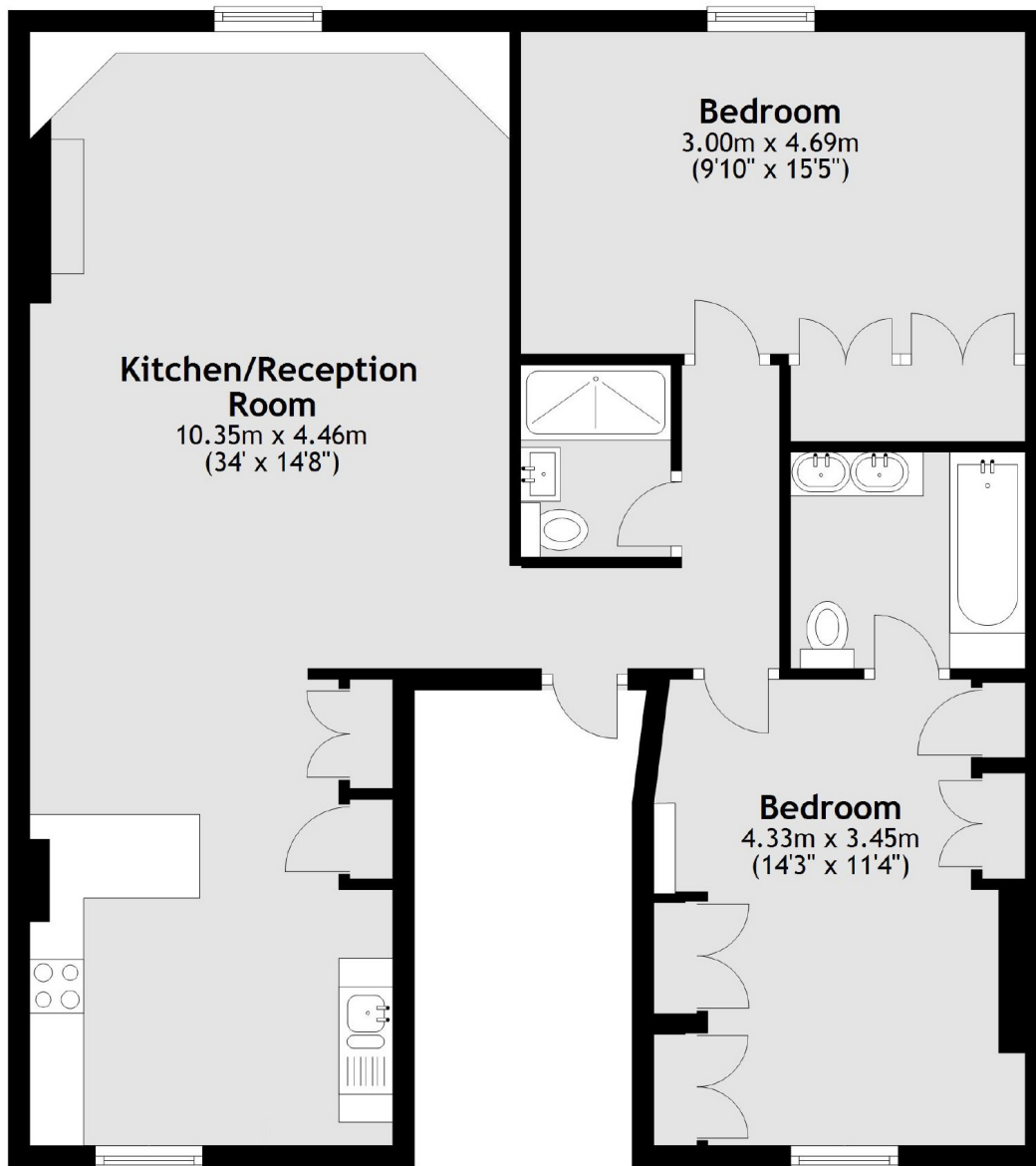
A beautifully presented spacious, lateral apartment on the third floor of a white stucco fronted Georgian building. With two double bedrooms, two bathrooms (one en-suite) and an open plan kitchen and reception room, this an ideal apartment for entertaining.

Sussex Place is ideally located for transport links, with Paddington a short walk away offering the Elizabeth Line, Underground, Overground and the Heathrow Express. The green spaces of Hyde Park are close by as are plenty of local shops and restaurants.

### Features

- Two Double Bedrooms
- Two Bathrooms
- Open Plan
- Shared Balcony
- Wooden Floors
- Dual Aspect

# Sussex Place, London, W2



Total area: approx. 84.9 sq. metres (914.1 sq. feet)