



## Manchester Drive, W10

£550,000

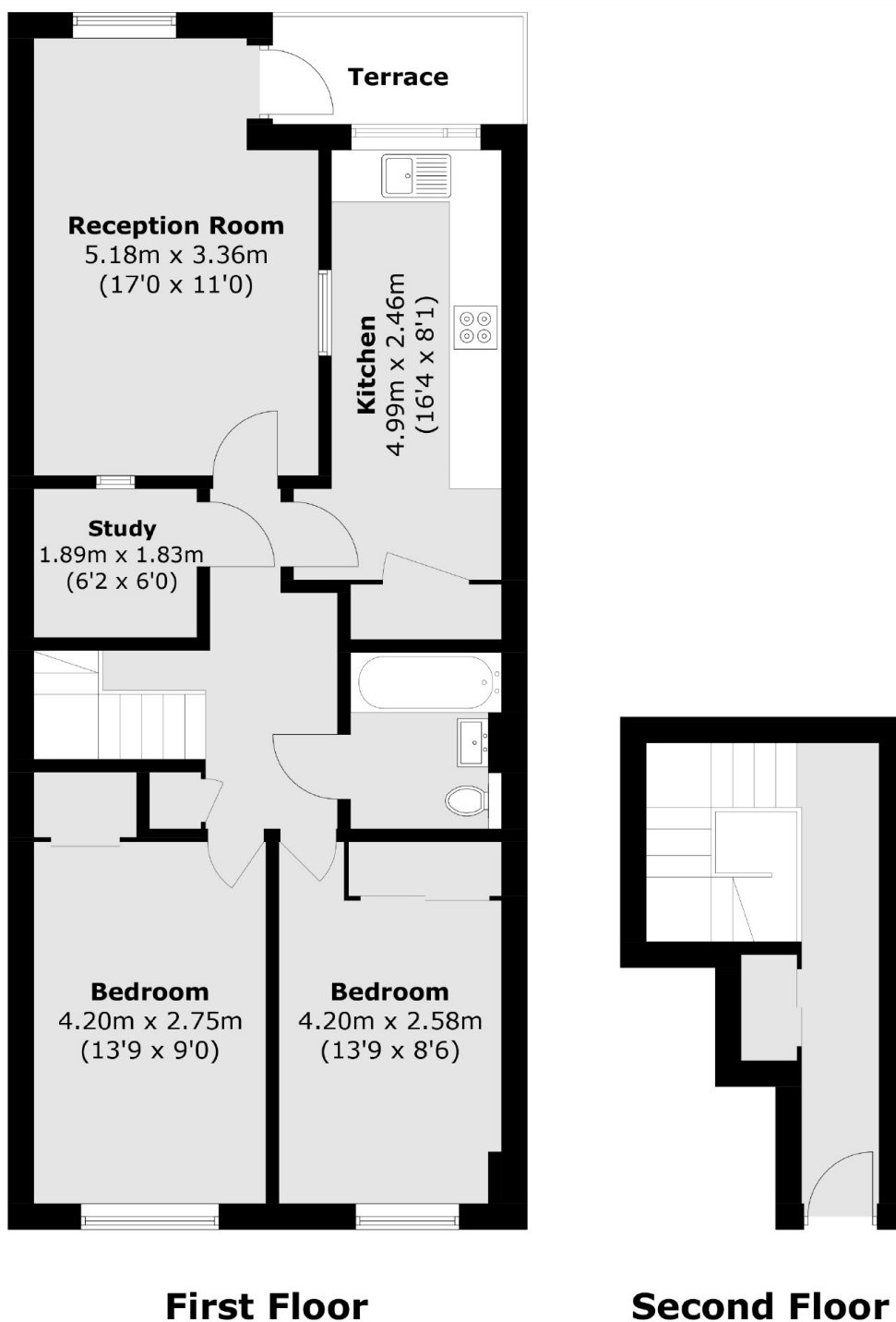
A well-presented and spacious apartment in a purpose built building, with two large double bedrooms, a study, large reception leading to the private balcony and a separate kitchen, with modern appliances. This will make an ideal investment or first time buyers purchase.

Manchester Drive in North Kensington, is close to the boutiques shops and restaurants on Golborne Road and Portobello Road and has convenient transport links on Ladbroke Grove.

### Features

- Two Double Bedrooms
- Study
- Separate Kitchen
- Spacious Rooms
- Wooden Floors
- Purpose Built

# Manchester Drive, London, W10



Total area (approx.): 79.7 sq. m (857.9 sq. ft)  
Terrace: 3.6 sq. m (38.7 sq. ft)