

Princes Mews
Hyde Park, W2

Dexters



About the property

A stylishly refurbished and well-proportioned house on a traditional cobbled mews, close to Hyde Park.

On the ground floor is an open plan kitchen, dining and reception space, with a high specification Mark Wilkinson kitchen. Downstairs is the family room with high ceilings, built-in wiring for speakers and dark wooden floors, creating a cosy environment for a film night. There's also a utility room and separate WC.

Spanning the top floor of the house is the principal

bedroom, with a luxurious en suite bathroom with twin vanity, walk-in shower and freestanding bath. The first floor has two double bedrooms and a well appointed family bathroom.

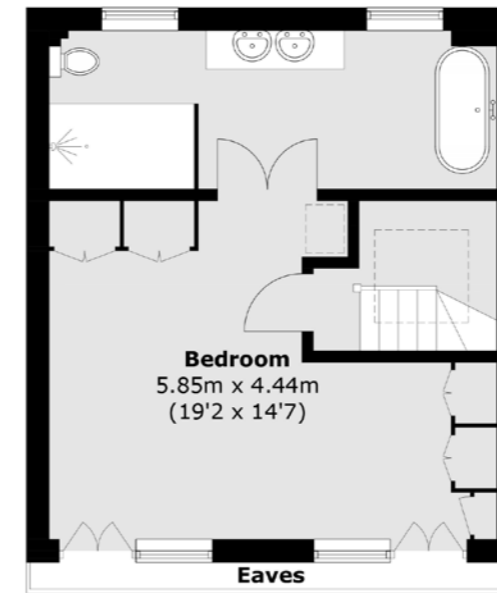
Princes Mews is ideally located close to the local shops and restaurants of Westbourne Grove and Notting Hill Gate. A short distance away are the green spaces of Hyde Park and the Whiteleys Bayswater regeneration with a mix of retail, dining and leisure.

Key features

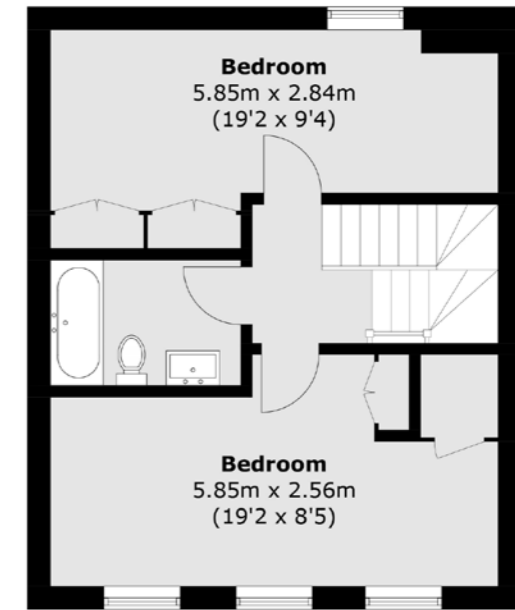
- Freehold Mews House
- Three Bedrooms
- Two Bathrooms
- Separate Reception Room
- Utility Room
- Access to Garden Square



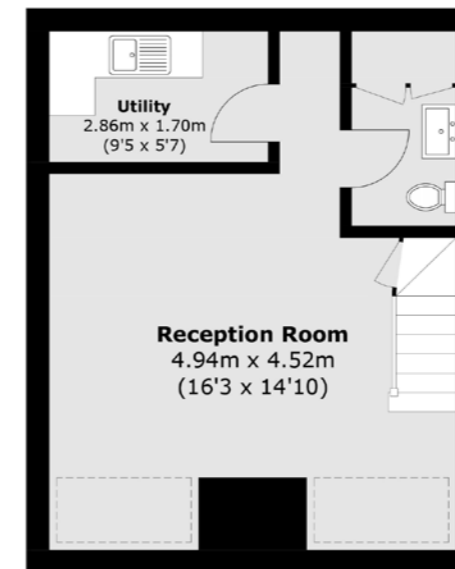




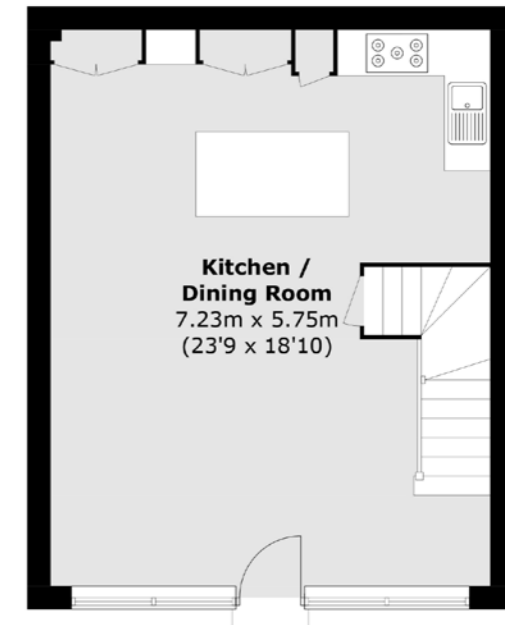
Second Floor



First Floor



Basement



Ground Floor



**TOTAL APPROX. FLOOR AREA 1,704.4 SQ. FT (158.5 SQ. M)
(EXCLUDING EAVES)**

Energy Rating: C. We aim to make our particulars both accurate and reliable. However they are not guaranteed; nor do they form part of an offer or contract. If you require clarification on any points then please contact us, especially if you're traveling some distance to view. Please note that appliances and heating systems have not been tested and therefore no warranties can be given as to their good working order.



Dexters Westbourne Grove
120 Westbourne Grove,
London, W11 2RR
020 7313 3600

Dexters