



Colville Terrace, W11

£1,100,000

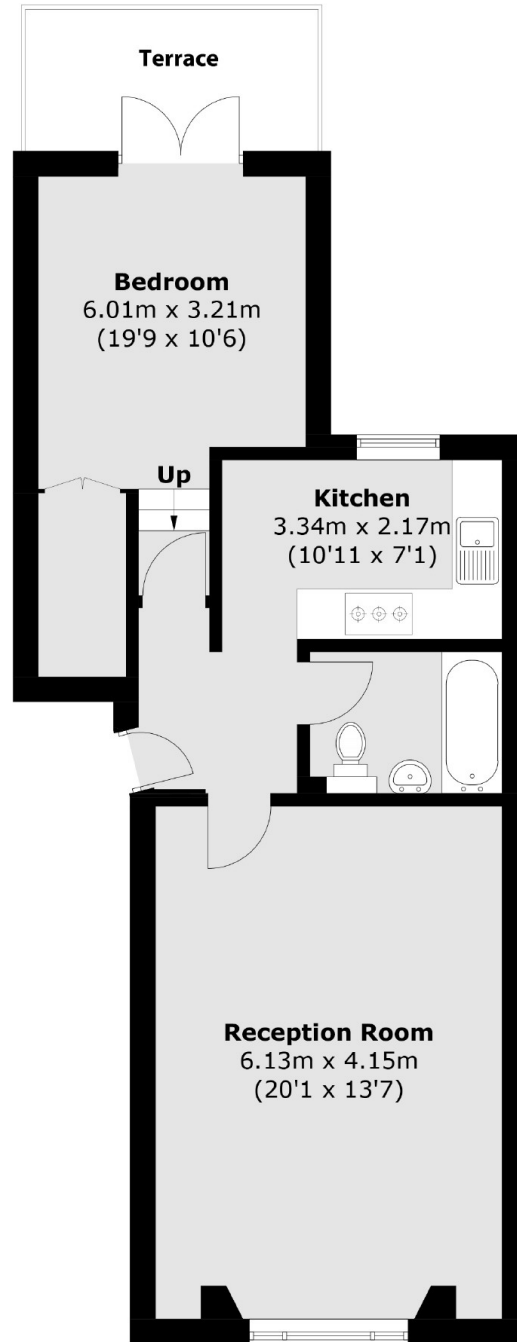
A prime, one bedroom apartment on the raised ground floor of a stucco fronted conversion, with off street parking. The property has a spacious reception with high ceilings, period cornicing and room to dine, separate modern fitted kitchen, built in wardrobes and access to the private terrace from the bedroom.

Colville Terrace is a popular residential street running from Portobello Road, near to its many boutiques, bars and restaurants. It is within easy walking distance of Westbourne Grove with all its high-end amenities and to Notting Hill Gate with its many transport connections.

Features

- One Bedroom
- Private Terrace
- Share of Freehold
- Prime Location
- High Ceilings
- Off Street Parking

Colville Terrace, London, W11



Ground Floor

Total area (approx.): 57.8 sq. m (622.1 sq. ft)
Balcony Area : 5.9 sq. m (63.5 sq. ft)