



## Westbourne Park Road, W2 £485,000

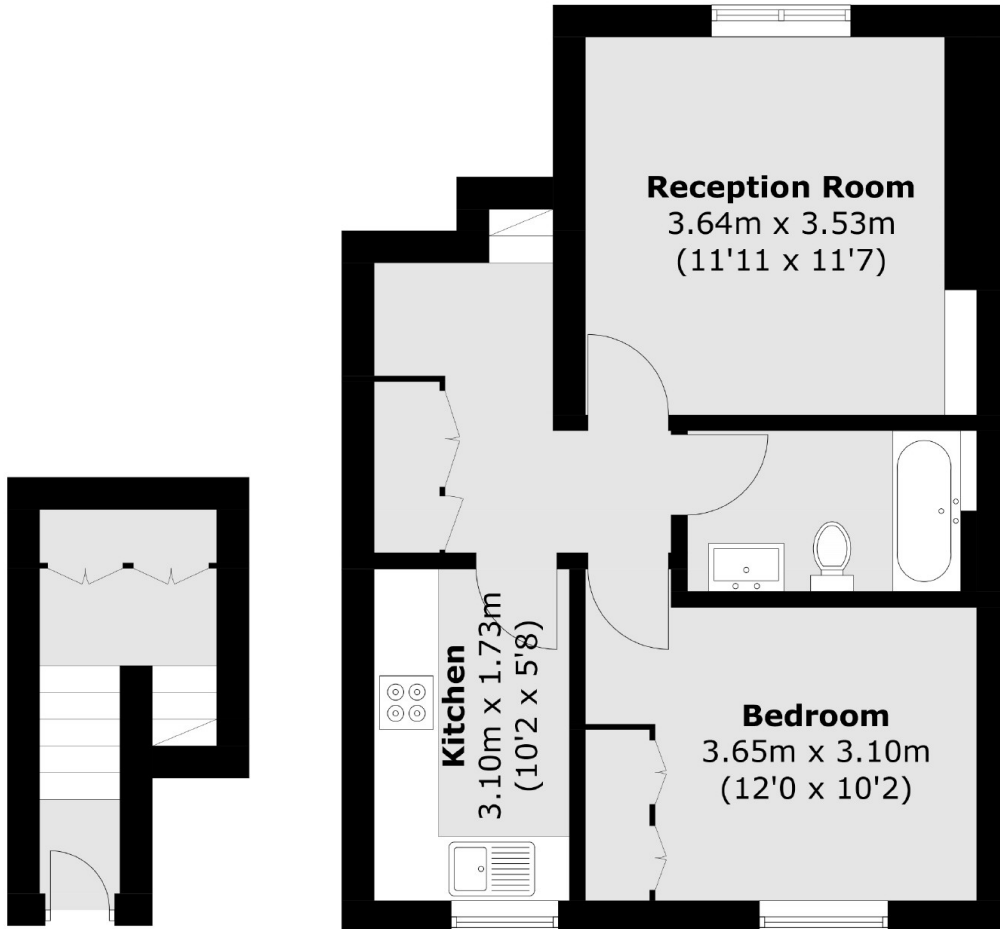
A top floor flat in a Victorian conversion with a double bedroom (with plenty of built in storage), reception room and a separate modern kitchen. The property is beautifully presented and has wooden floors throughout.

Westbourne Park Road is centrally located between Westbourne Park and Royal Oak Underground Stations, is a short walk away from Portobello Road with plenty of local boutiques, restaurants and pubs including the Cow and the Ledbury.

### Features

- One Double Bedroom
- Top Floor
- Victorian Conversion
- Separate Kitchen
- Refurbished
- Long Lease

Westbourne Park Road,  
London, W2



**Second Floor**

**Third Floor**

Total area (approx.): 46.1 sq. m (496.2 sq. ft)