



Portobello Court, W11

£550,000

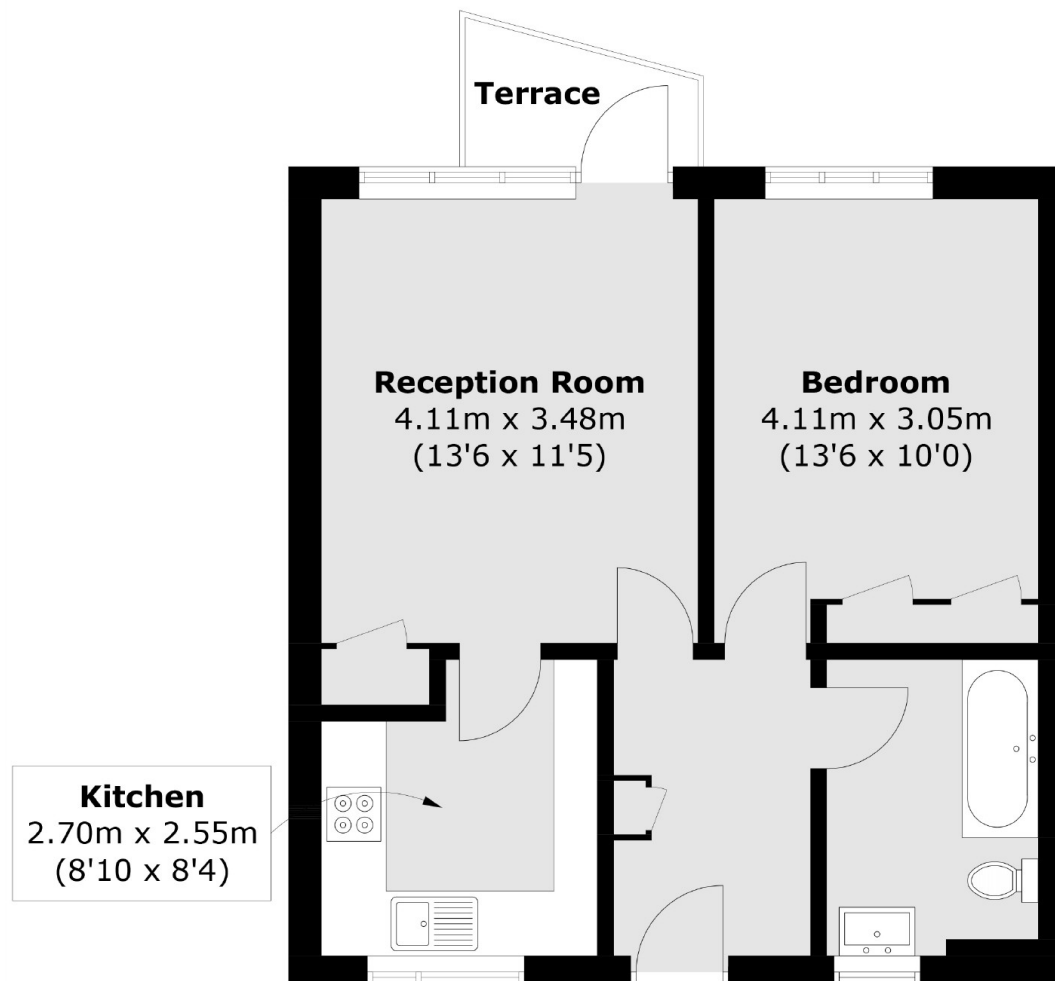
A spacious one bedroom apartment located on the second floor of a purpose built building. An ideal first time purchase or investment which has a large reception with room to dine and access to the balcony overlooking Portobello Road, a modern separate kitchen and ample storage throughout.

Westbourne Grove has a wide range of shops, restaurants and bars within its proximity and is also convenient for the many local fresh fruit and veg stalls available on nearby Portobello Road.

Features

- One Double Bedroom
- Balcony
- Separate Kitchen
- Portobello Road
- Close To Amenities
- Notting Hill

Portobello Court, London, W11



Total area (approx.): 46.6 sq. m (501.6 sq. ft)
Terrace area (approx.): 2.3 sq. m (24.7 sq. ft)