



Westbourne Gardens, W2

£1,050,000

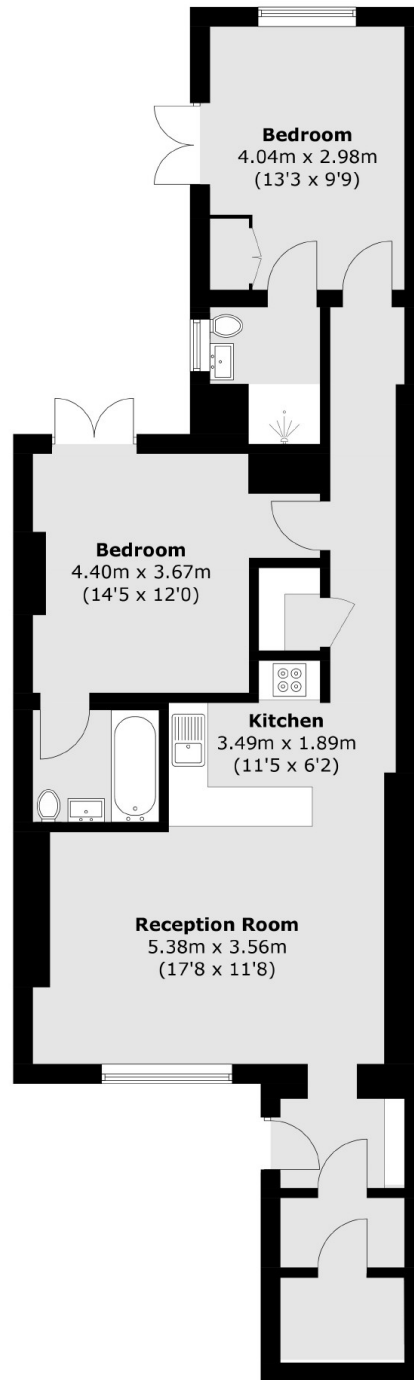
A spacious two double bedroom apartment with a large, South-West facing garden, ideal for al fresco dining. Set in a white stucco fronted building, with its' own front and scope to extend to the rear (subject to the usual consents), this is an ideal first time buyers home.

Westbourne Gardens is overlooking a peaceful garden square and is ideally located within walking distance of the local boutiques, shops and restaurants on Westbourne Grove, Royal Oak Underground and Paddington Station, giving great access across and out of London.

Features

- Two Double Bedrooms
- South West Facing Garden
- Scope for Extension (STPP)
- Separate Kitchen
- Garden Square
- Close to Amenities

Westbourne Gardens, London, W2



Total area (approx.): 79.7 sq. m (857.9 sq. ft)