

## Clanricarde Gardens, W2

£800,000

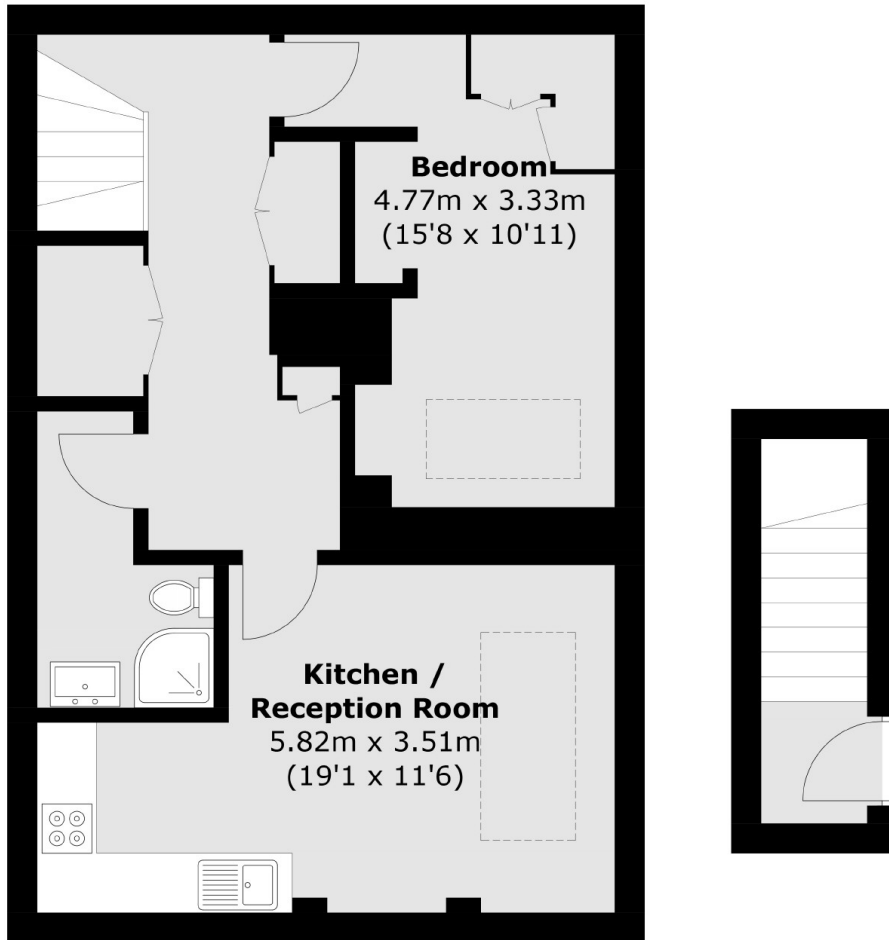
A stylish apartment, finished to a high standard with an open plan kitchen / reception room, spacious bedroom with built in storage and a well equipped bathroom, set on the lower ground floor of a handsome period building with a porter and a gym.

Clanricarde Gardens is a 'no through' road, in the heart of Notting Hill, opposite Kensington Palace and Hyde Park, there's superb transport links and plenty of local amenities to enjoy.

### Features

- Modern Finish
- Sought After Location
- Period Conversion
- Gym
- Porter
- Close To Amenities

# Clanricarde Gardens, London, W2



## Basement

## Ground Floor

Total area (approx.): 55.9 sq. m (601.7 sq. ft)  
(Including Basement)

**Dexters**

Westbourne Grove  
120 Westbourne Grove  
London  
W11 2RR

Sales  
020 7313 3600

Energy Rating: B. We aim to make our particulars both accurate and reliable. However they are not guaranteed; nor do they form part of an offer or contract. If you require clarification on any points then please contact us, especially if you're traveling some distance to view. Please note that appliances and heating systems have not been tested and therefore no warranties can be given as to their good working order.

 **RICS** | Regulated  
Estate Agent  
and Letting Agent

[dexters.co.uk](http://dexters.co.uk)