



## Colville Terrace, W11

£650,000

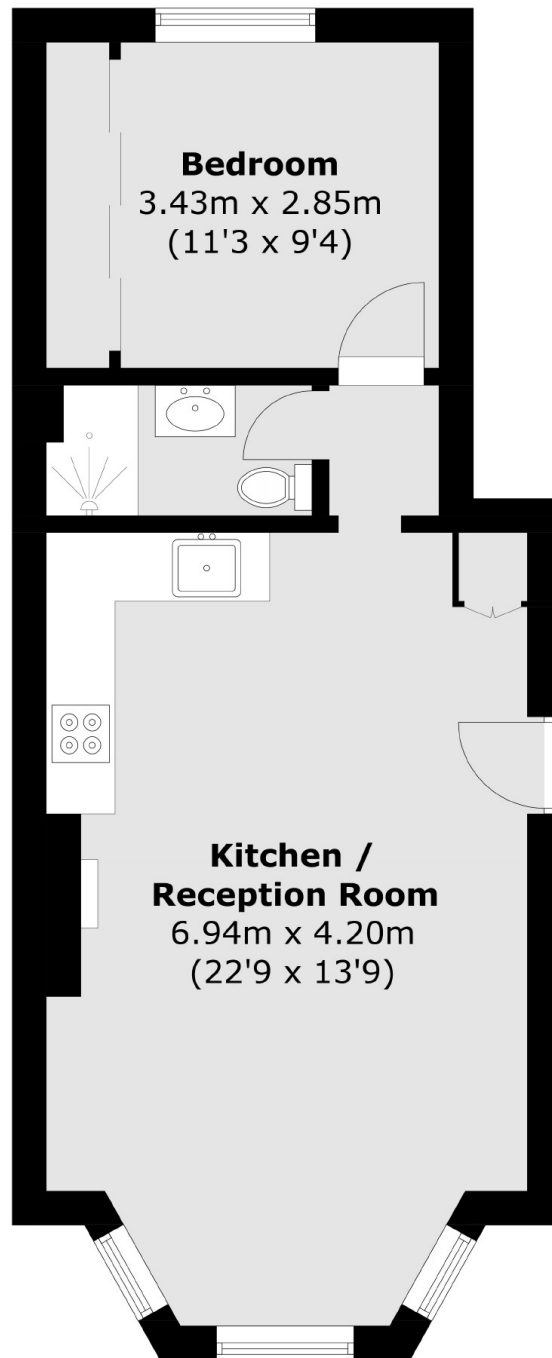
A one bedroom apartment in a Victorian period conversion. The property has a spacious open-plan reception with high ceilings, wooden flooring, a large bay window and a fitted kitchen. The bedroom also benefits from floor to ceiling built-in storage.

Colville Terrace is a sought after, prime Notting Hill address and provides close proximity to plenty of local shops, restaurants and pubs on Westbourne Grove and Portobello Road. Ladbroke Grove and Notting Hill Gate underground stations are also nearby.

### Features

- One Bedroom
- Open-Plan Reception
- High Ceilings
- Wooden Flooring
- Notting Hill
- Share of Freehold

Colville Terrace,  
London, W11



Total area (approx.): 41.9 sq. m (451 sq. ft)