



## Bosworth Road, W10

£530,000

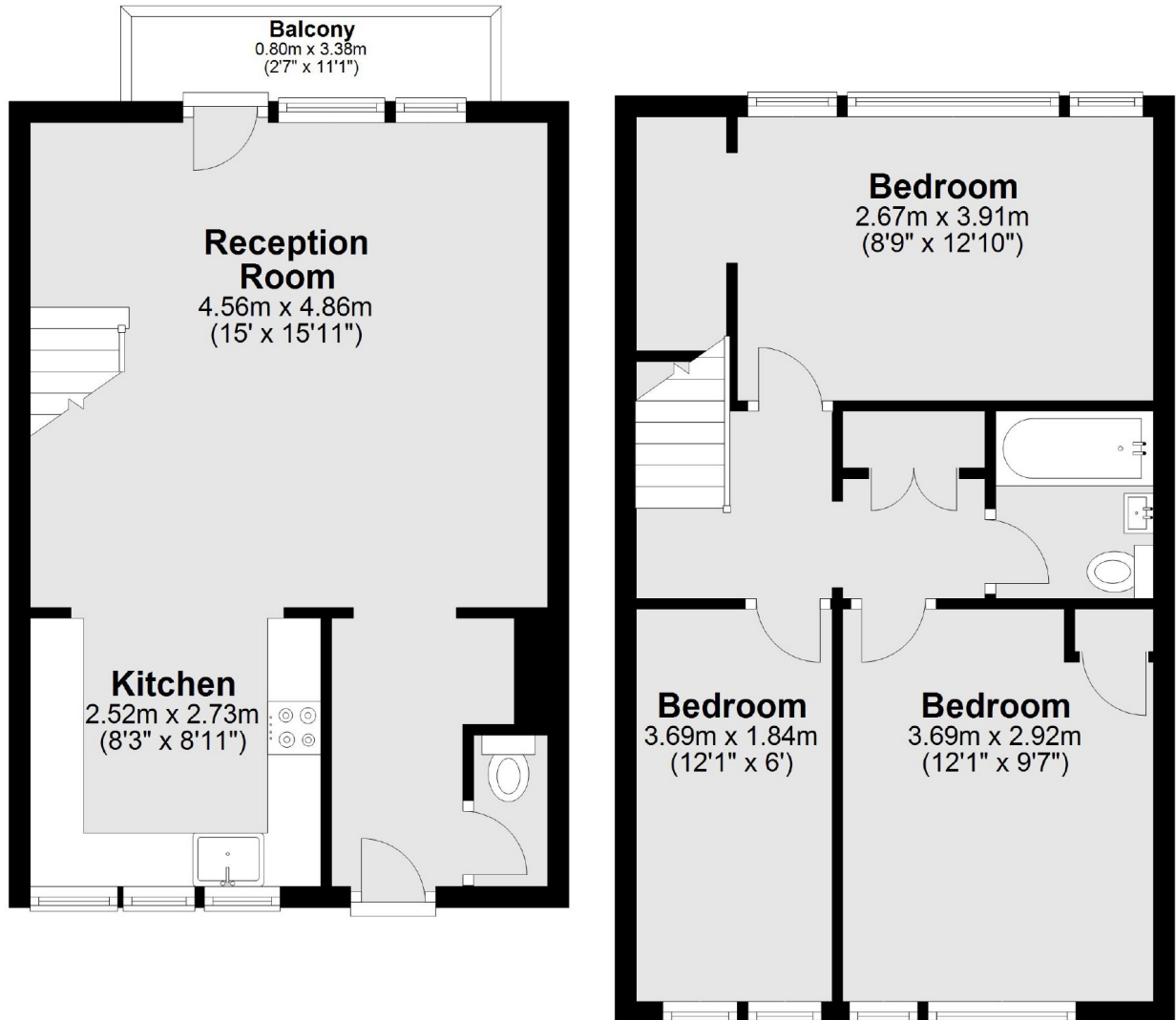
A spacious three bedroom split level apartment in a purpose built block. The property has a large open plan reception, with room to dine, wooden flooring, a fitted kitchen and access to the balcony, with all three bedrooms on the other level.

Located moments from the shops and restaurants of Golborne Road and Portobello Road, as well as the transport links of Westbourne Park underground station (Hammersmith & City and Circle Lines).

### Features

- Split Level
- Open Plan
- Balcony
- Three Bedrooms
- Close To Amenities

Bosworth Road,  
London, W10



Total area: approx. 75.3 sq. metres (810.6 sq. feet)