



Edgware Road, W2

£600,000

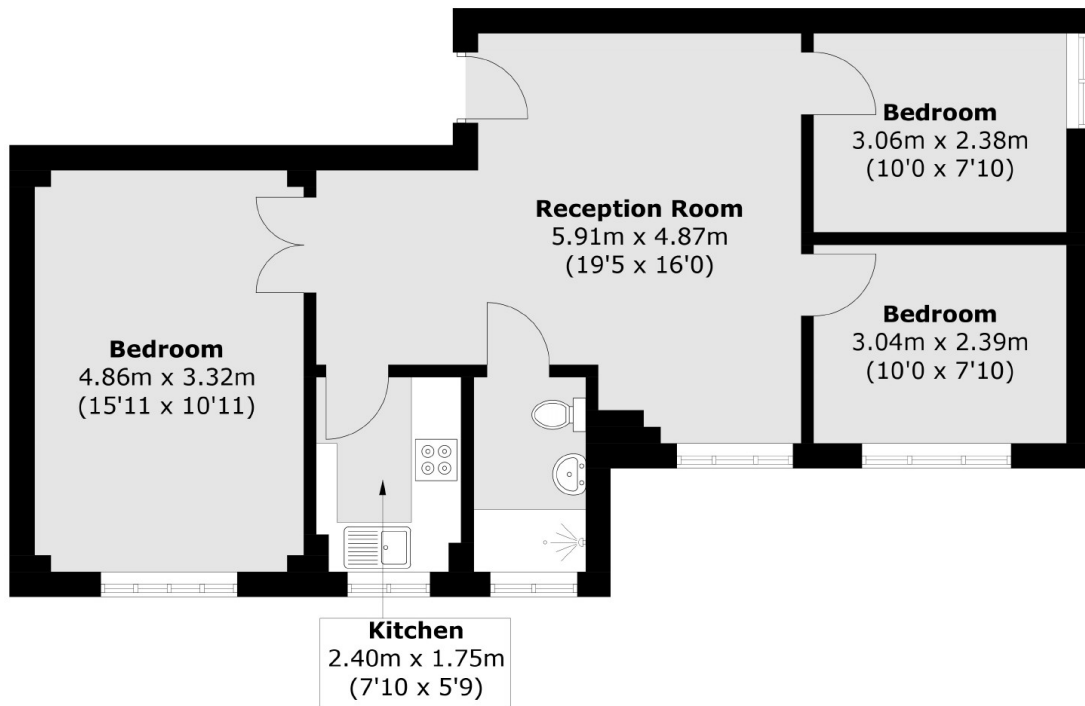
A three bedroom apartment in a purpose built portered block (with a lift) The property has a spacious reception with wooden flooring and room to dine, a modern separate kitchen, and a generous sized principal bedroom.

Park West is local to the amenities and transport links of Edgware Road, Paddington and Connaught Village whilst the shops of Oxford street and vast grounds of Hyde Park are nearby.

Features

Three Bedroom
Porter
Separate Kitchen
Spacious Reception
Hyde Park

Edgware Road,
London, W2



Total area (approx.): 63.2 sq. m (680.3 sq. ft)

Dexters

Westbourne Grove
120 Westbourne Grove
London
W11 2RR
Sales
020 7313 3600

Energy Rating: C. We aim to make our particulars both accurate and reliable. However they are not guaranteed; nor do they form part of an offer or contract. If you require clarification on any points then please contact us, especially if you're traveling some distance to view. Please note that appliances and heating systems have not been tested and therefore no warranties can be given as to their good working order.

 **RICS** | Regulated
Estate Agent
and Letting Agent

dexters.co.uk