



Cornwall Crescent, W11  
£1,650,000



## Cornwall Crescent, W11

A spacious top floor maisonette with 360 degree skyline views from the stunning roof terrace.

Measuring almost 1,700 Square Foot, this Victorian conversion is entered on the raised ground floor and spans over three stories.

On the first floor is the double reception room with exposed brickwork, large sash windows and a feature fireplace, making an ideal entertaining, dining and reception space. The separate kitchen is to the rear, with fully equipped and modern fitted kitchen units.

Upstairs there are two large double bedrooms and a third double plus two family bathrooms. On the top floor is the principle bedroom with accompanying bathroom, large enough and laid out ideally, for a couple to share. The private roof terrace is accessed via the electric hatch and is an amazing space for al fresco dining, while taking in the far reaching views.

Cornwall Crescent is just off Ladbrooke Grove and is well located for the fresh food markets on Portobello Road and Westbourne Grove's many cafes, restaurants and bars. There's a Sainsburys super market nearby and Ladbrooke Grove is the nearest Underground

### Features

- Share of Freehold
- Large Roof Terrace
- Four Bedrooms
- Three Bathrooms
- Double Reception Room
- Own Front Door



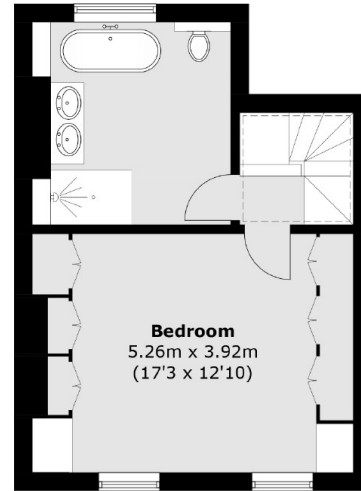




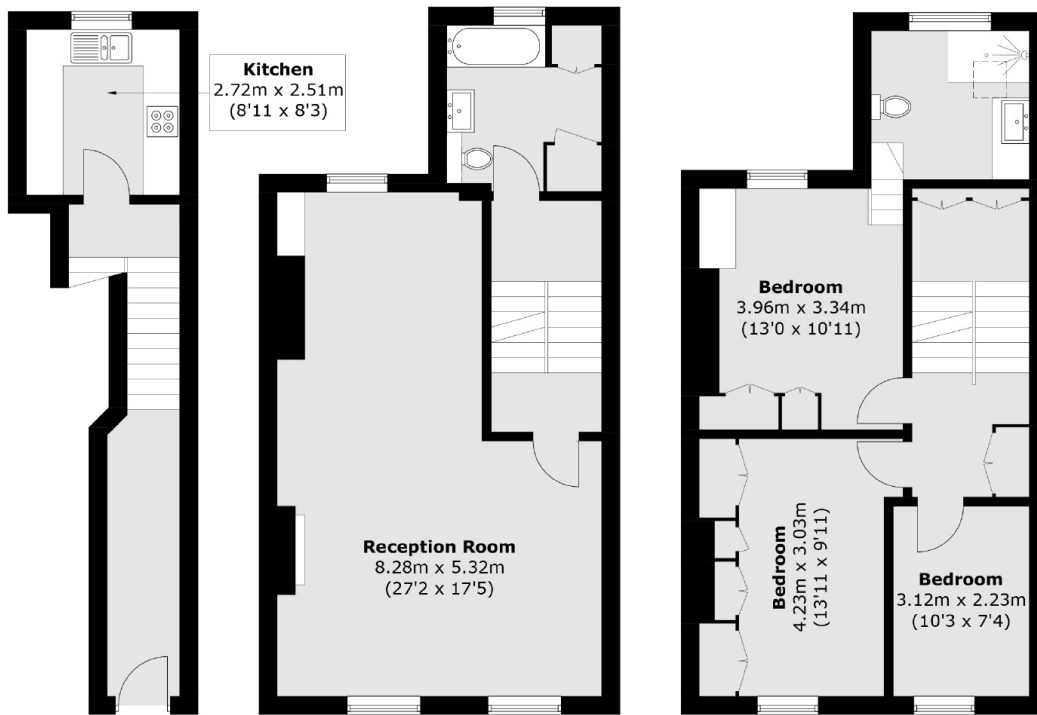
# Cornwall Crescent, London, W11



**Fourth Floor**



**Third Floor**



**Ground Floor**

**First Floor**

**Second Floor**

Total area (approx.): 155.5 sq. m (1,673.8 sq. ft)  
Roof Terrace (approx.): 12.5 sq. m (134.5 sq. ft)