



## Holland Villas Road, W14

£2,000,000

A lateral, three double bedroom apartment in a prestigious, portered mansion block in the heart of Holland Park.

Addisland Court is on Holland Villas Road, a residential road set with detached villas and is a short walk away from the manicured green spaces of Holland Park, Westfield and plenty of local transport links.

### Features

- Three Double Bedrooms
- Three Bathrooms
- Reception Room and Balcony
- Parquet Wooden Flooring
- Lift and Porter
- Share of Freehold
- Digital Staging



## Holland Villas Road, W14

Set in a beautiful and imposing 1930's Mansion block (with resident porter and lifts) and entered into via the recently refurbished communal communal areas.

This lateral apartment was tastefully refurbished by the current owner and has kept many period features, including the parquet flooring in the reception room and cornicing throughout.

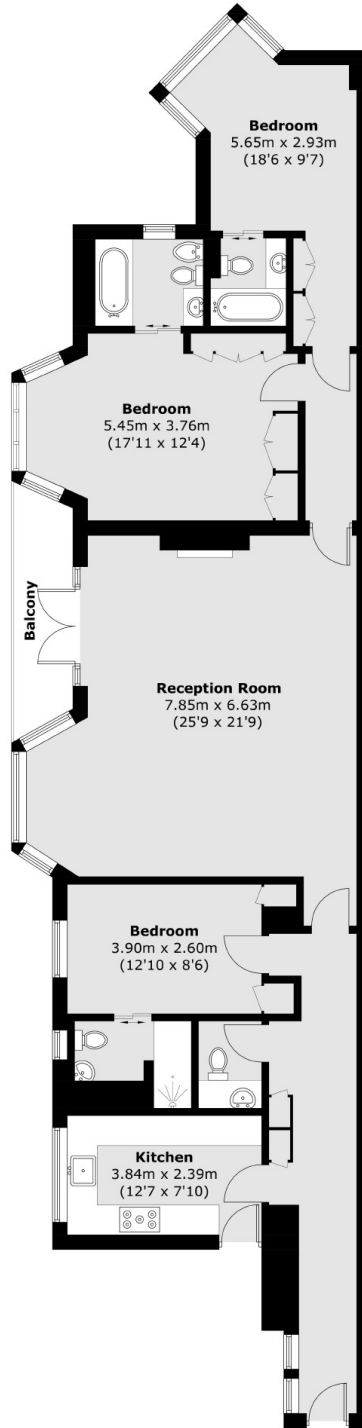
The large, double reception room leads out to the private West facing balcony and all three bedrooms have an en suite bathroom, the modern fitted kitchen is well appointed and there's a separate WC.

Separately, secure parking and storage units are often available to buy and rent by separate negotiation.





Holland Villas Road,  
London, W14



Total area (approx.): 132.6 sq. m (1,427.3 sq. ft)  
Balcony area (approx.): 5.4 sq. m (58.1 sq. ft)