



Sussex Gardens, W2

£1,500,000

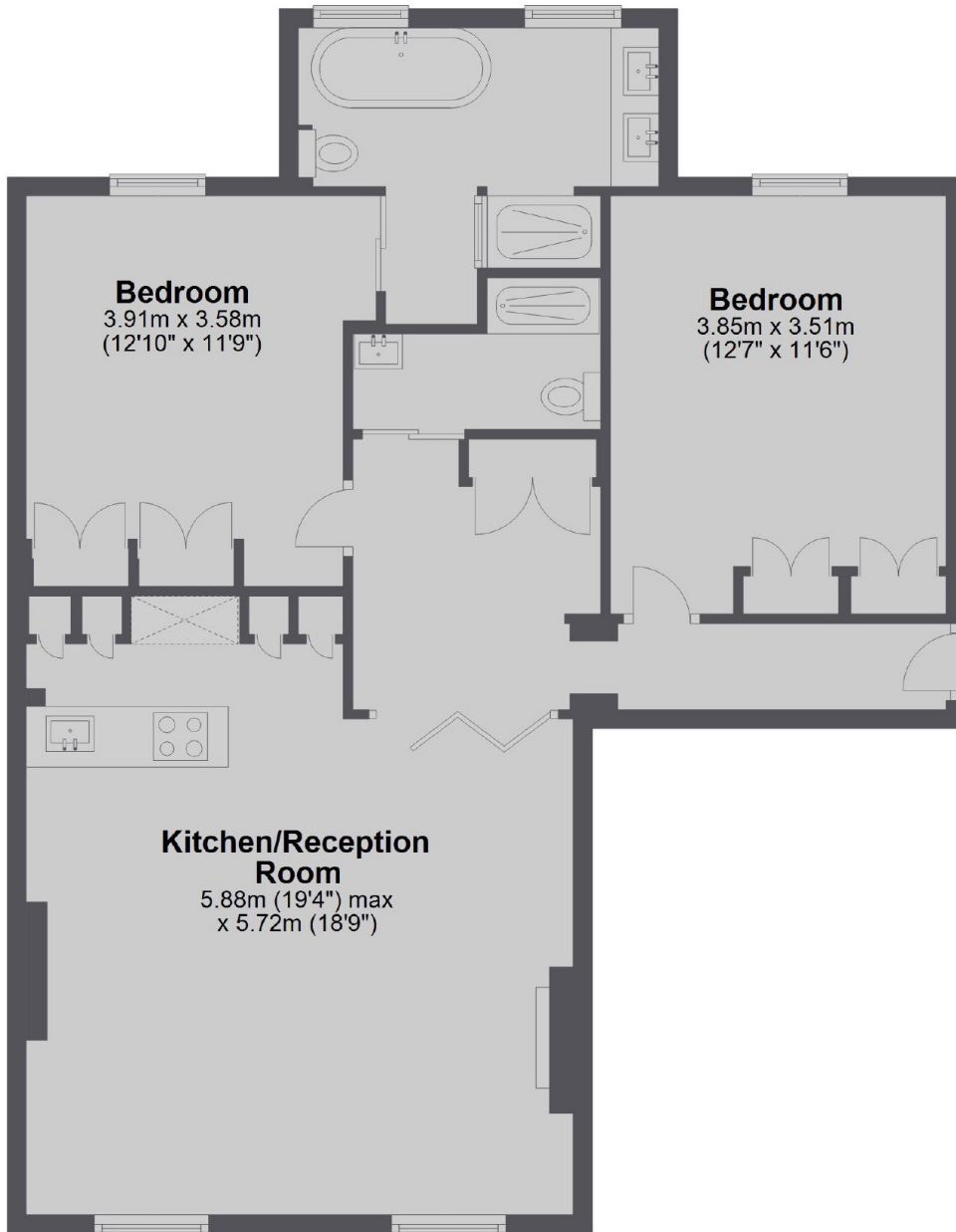
A high specification, spacious and lateral apartment in an early Victorian conversion with a lift. With two generous double bedrooms and two bathrooms (one en suite) and an open plan kitchen and reception room, this is an ideal property for those that love entertaining.

Paddington Mainline Station is nearby for District, Circle, Hammersmith and City and Bakerloo Lines as well as National Rail and the Heathrow Express and the green space of Hyde Park are a short walk away.

Features

- Two Bedrooms
- Two Bathrooms
- Open Plan Kitchen/Reception
- Lift
- Victorian Conversion
- Close to Amenities

Sussex Gardens,
London, W2



Total area: approx. 88.6 sq. metres (953.7 sq. feet)