



## Queensborough Mews, W2 £1,100,000

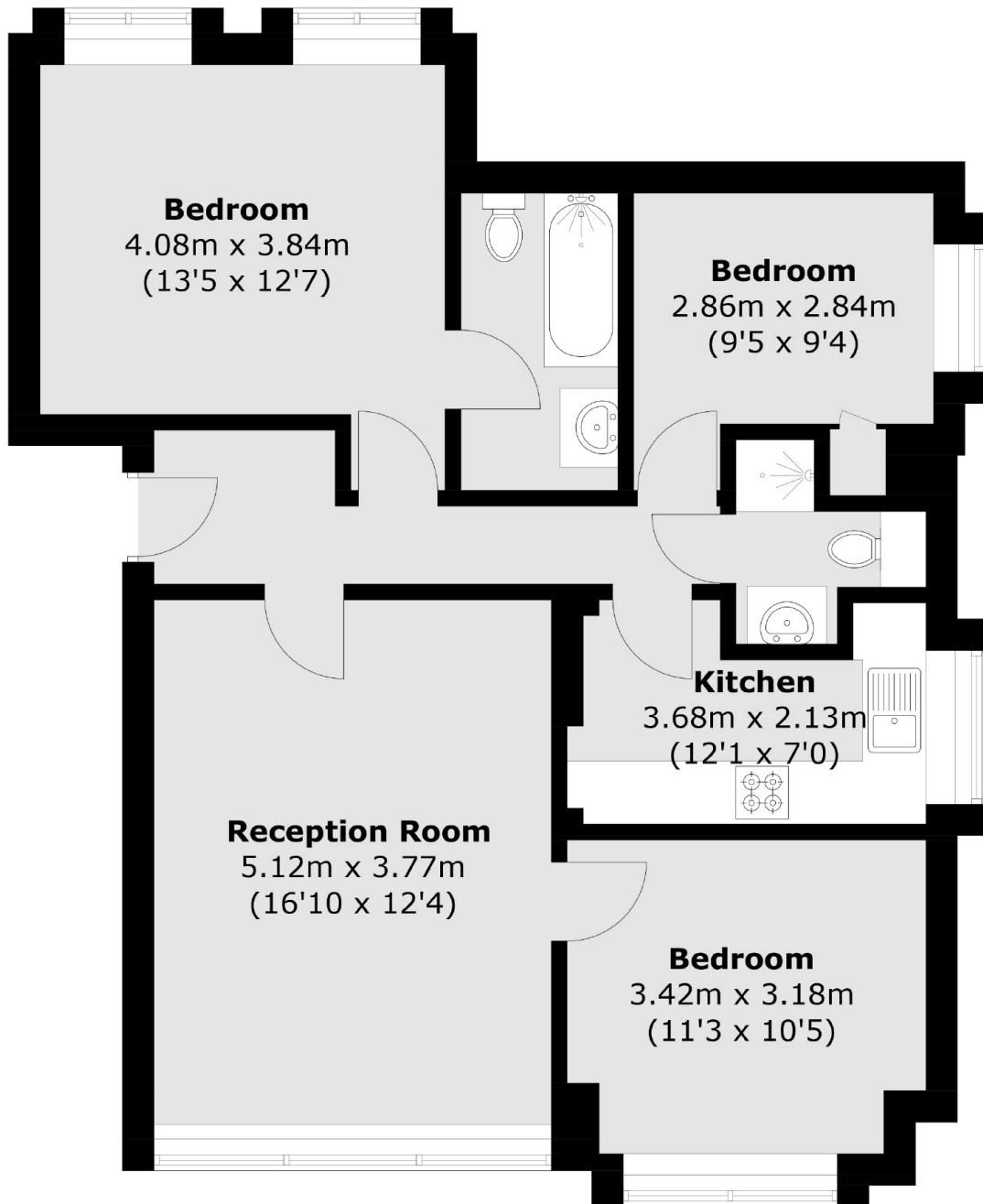
A three double bedroom, lateral apartment in a purpose built development close to Hyde Park. With a separate kitchen and reception room for entertaining, this will be an ideal home or investment.

Joanne House is on a tree lined, residential road opposite the green spaces of Hyde Park. Bayswater, Queensway and Lancaster Gate undergrounds are close by, as is Paddington station offering convenient access across and out of London.

### Features

- Three Bedrooms
- Separate Kitchen
- Ground Floor
- Purpose Built
- Close To Amenities
- Hyde Park

# Queensborough Mews, London, W2



Total area (approx.): 74.8 sq. m (805.1 sq. ft)