



Westbourne Terrace, W2

£1,695,000

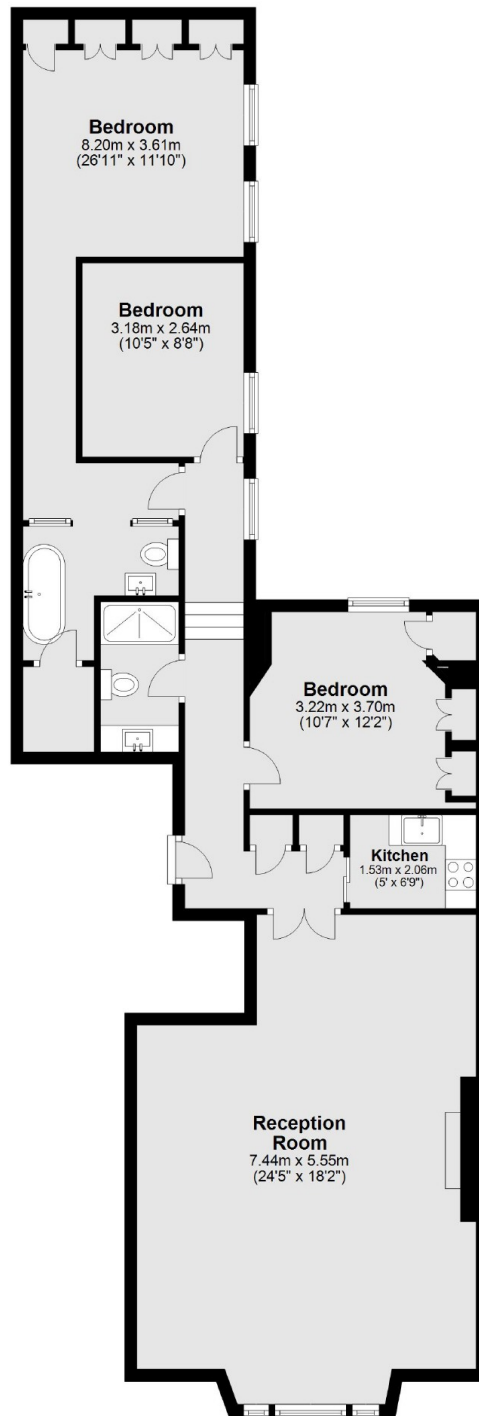
A stunning three bedroom apartment in a stucco fronted Victorian conversion. The property was recently refurbished to an exacting standard and has a spacious reception with room to dine, a modern separate kitchen, high ceilings and parquet flooring throughout.

Westbourne Terrace is a popular, tree lined street conveniently placed within a short distance to Hyde Park, Lancaster Gate and Paddington underground stations.

Features

- Private Car Park Access
- High Ceilings
- Grade II Listed
- Three Bedrooms
- Separate Kitchen
- High Specification

Westbourne Terrace, London, W2



Total area: approx. 103.8 sq. metres (1116.8 sq. feet)