

Addison Road, W14

£1,850,000

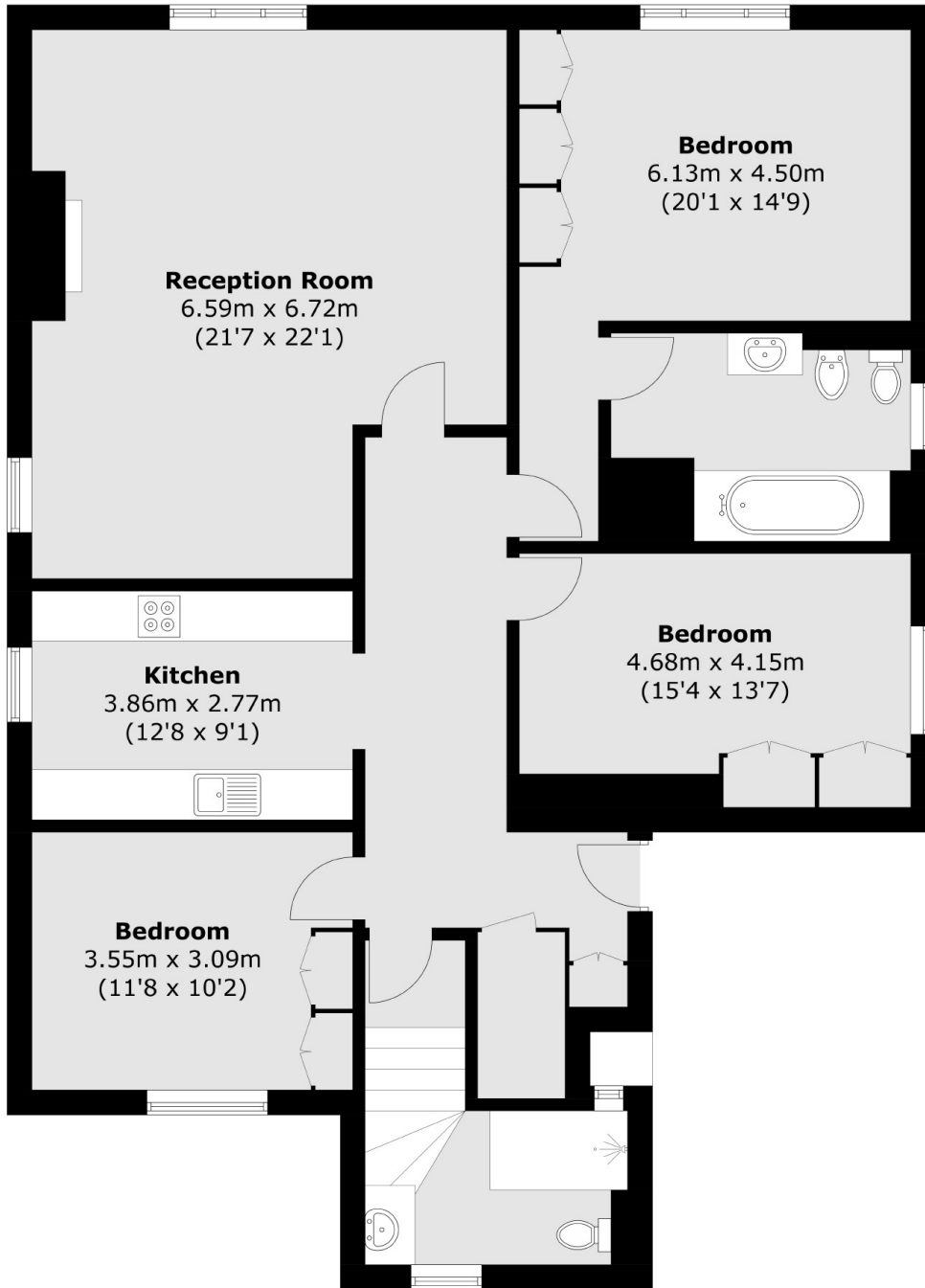
A spacious three bedroom apartment on the first floor of an imposing detached Victorian villa located in Holland Park. There is a large reception room, separate modern kitchen, and wooden flooring throughout. The property features high ceilings and period features.

The property is ideally situated on one of the most prestigious streets in Holland Park with easy access to Westfield shopping centre Holland Park Station and the manicured green spaces of Holland Park.

Features

- Three Double Bedrooms
- First Floor
- Off Street Parking
- Two Bathrooms
- Holland Park
- Close To Amenities

Addison Road,
London, W14



Total area (approx.): 128.3 sq. m (1,381.0 sq. ft)