



Hatherley Grove, W2

£470,000

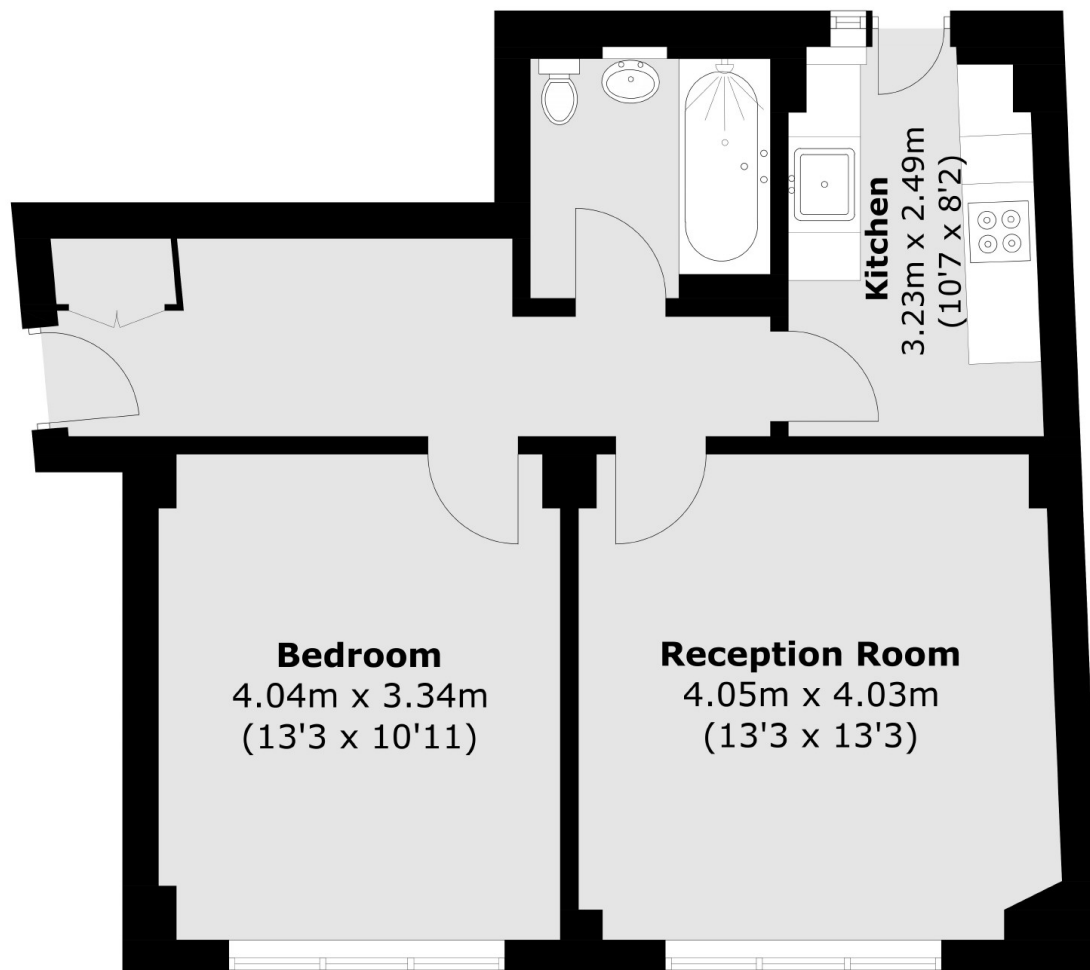
A one bedroom apartment in a purpose built portered block with lift access. The property has a separate modern kitchen, a spacious reception room with room to dine, and high ceilings throughout.

Bayswater, Queensway and Royal Oak tube stations are all a short distance away as is Paddington Rail station (with the Heathrow Airport Express). Hyde Park and Kensington Gardens are also nearby.

Features

- One Bedroom
- Separate Kitchen
- Portered Block
- Lift
- Close To Amenities
- Notting Hill

Hatherley Grove, London, W2



Total area (approx.): 51.8 sq. m (557.6 sq. ft)