



Russell Road, W14

£900,000

A two double bedroom apartment on the top floor of a purpose built block with lifts and communal gardens. The property has a spacious reception with access to the balcony and room to dine, a separate kitchen, built in wardrobes in both bedrooms and an en suite in the principal bedroom.

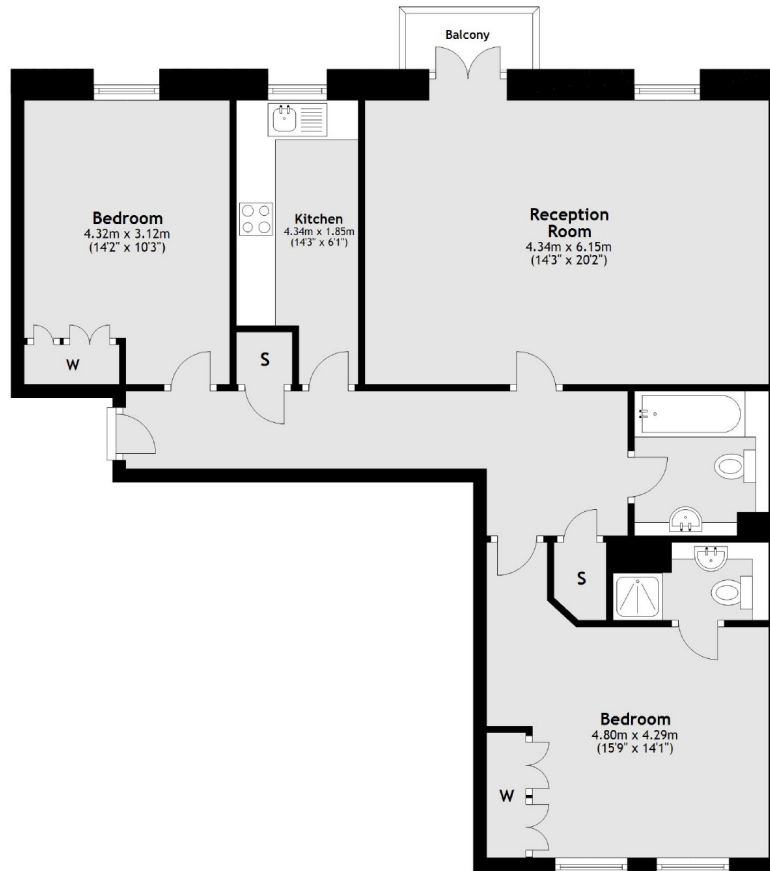
The property is ideally located for all the shops restaurants and bars of Kensington High Street and offers easy access to Kensington Olympia Underground Station and Westfield Shopping Centre.

Features

- Two Double Bedrooms
- Two Bathrooms
- Off Street Parking
- Great Transport Links
- Private Balcony
- Communal Garden

Russell Road,
London, W14

Third Floor



Main area: Approx. 87.4 sq. metres (940.5 sq. feet)
Plus balconies, approx. 2.0 sq. metres (21.3 sq. feet)