



Holland Park Avenue, W11 £650,000

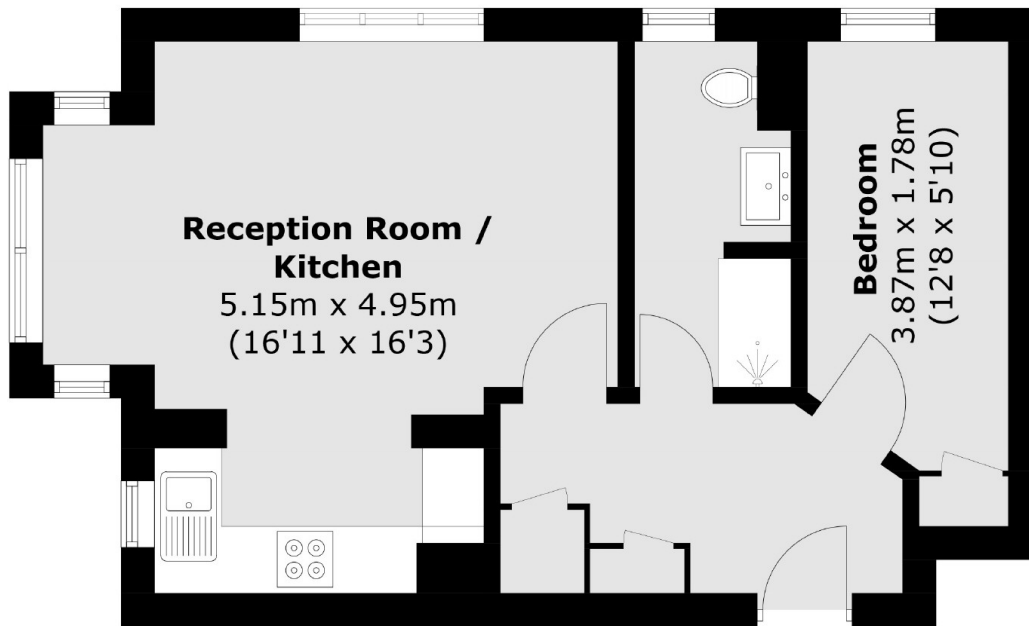
A one bedroom apartment in a well maintained portered purpose built block in Holland Park. This apartment has an open plan reception with a modern fitted kitchen, a Juliette balcony with dual aspect, and a spacious communal roof terrace.

Located for the lovely cafés, restaurants and bars surrounding Notting Hill as well as easy access to both Holland Park and Notting Hill Gate stations.

Features

- One Bedroom
- Open Plan
- Communal Roof Terrace
- Communal Heating
- Communal Hot Water
- Porter and Lift

Holland Park Avenue,
London, W11



Total area (approx.): 39.6 sq. m (426.2 sq. ft)

Dexters

Westbourne Grove
120 Westbourne Grove
London
W11 2RR
Sales
020 7313 3600

Energy Rating: C. We aim to make our particulars both accurate and reliable. However they are not guaranteed; nor do they form part of an offer or contract. If you require clarification on any points then please contact us, especially if you're traveling some distance to view. Please note that appliances and heating systems have not been tested and therefore no warranties can be given as to their good working order.

 **RICS** | Regulated
Estate Agent
and Letting Agent

dexters.co.uk