



Princes Mews, W2
£1,400,000

Dexters



Princes Mews, W2

A charming two bedroom freehold mews house on a pretty cobbled mews and with a large, private roof terrace.

Arranged over three stories and entered on the ground floor into the spacious eat-in kitchen which is ideal for dinner parties and Sunday lunches.

On the first floor is the principal bedroom, with an en suite shower room and a separate family bathroom.

Upstairs the reception room spans the width of the building and leads to the second bedroom. It also has a spiral stair case leading to the full width roof terrace, ideal for al fresco dining.

This is an ideal blank canvass for a buyer looking for a project to create a home in their own style and finish.

Princes Mews is a quiet residential mews, ideally located within close proximity of the local shops and restaurants of Westbourne Grove and Notting Hill Gate. The green spaces of Hyde Park and Holland Park are a short walk away and the Whiteleys / Bayswater regeneration is round the corner.

Features

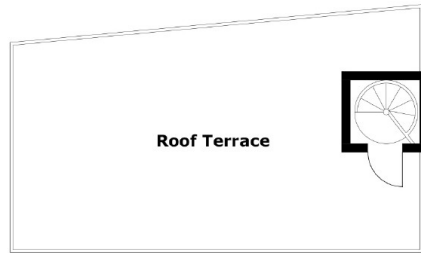
- Freehold Mews House
- Private Roof Terrace
- Eat-In Kitchen
- Two Double Bedrooms
- Two Bathrooms
- Close to Hyde Park



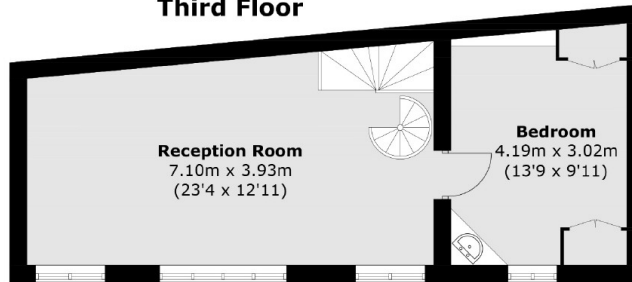




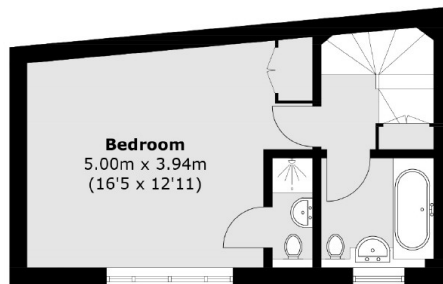
Princes Mews, London, W2



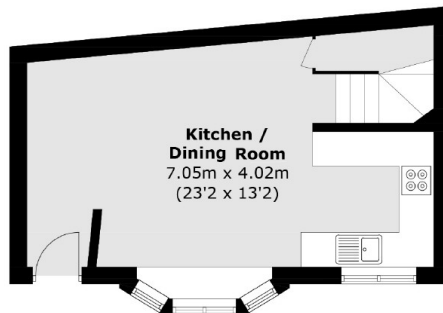
Third Floor



Second Floor



First Floor



Ground Floor

Total area (approx.): 94.7 sq. m (1,019.3 sq. ft)
Roof Terrace: 25.4 sq. m (273.4 sq. ft)