



Russell Gardens Mews, W14 £1,750,000

An impressive four bedroom mews house in a cobbled mews with potential to extend subject to planning. The property has an open plan reception on the ground floor, with breakfast bar and fitted kitchen, three bedrooms on the first floor, and loft space on the top floor.

Russell Gardens Mews is conveniently located in the Royal Borough of Kensington & Chelsea. The property is situated within easy reach of Holland Park Central Line, Westfield Shopping Centre and Kensington High Street.

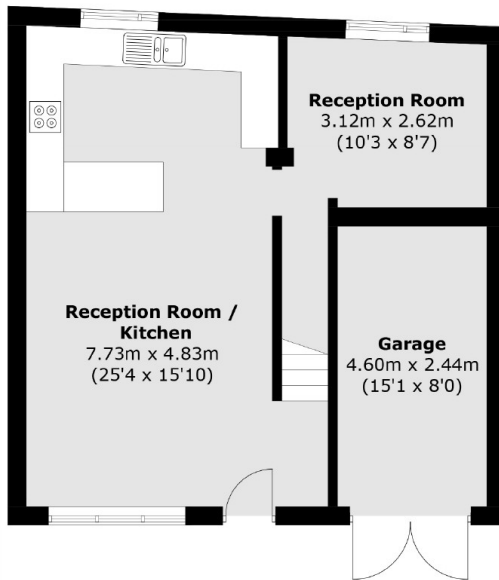
Features

- Mews House
- Garage
- Four Bedrooms
- Two Bathrooms
- Open Plan
- Kensington High Street

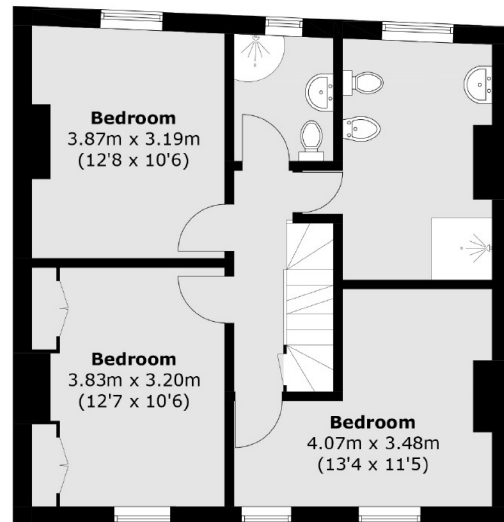
Russell Gardens Mews, London, W14



Second Floor



Ground Floor



First Floor

Total area (approx.): 120.1 sq. m (1,292.7 sq. ft)
Garage (approx.): 11.1 sq. m (119.5 sq. ft)