



Palace Gardens Terrace, W8 £1,400,000

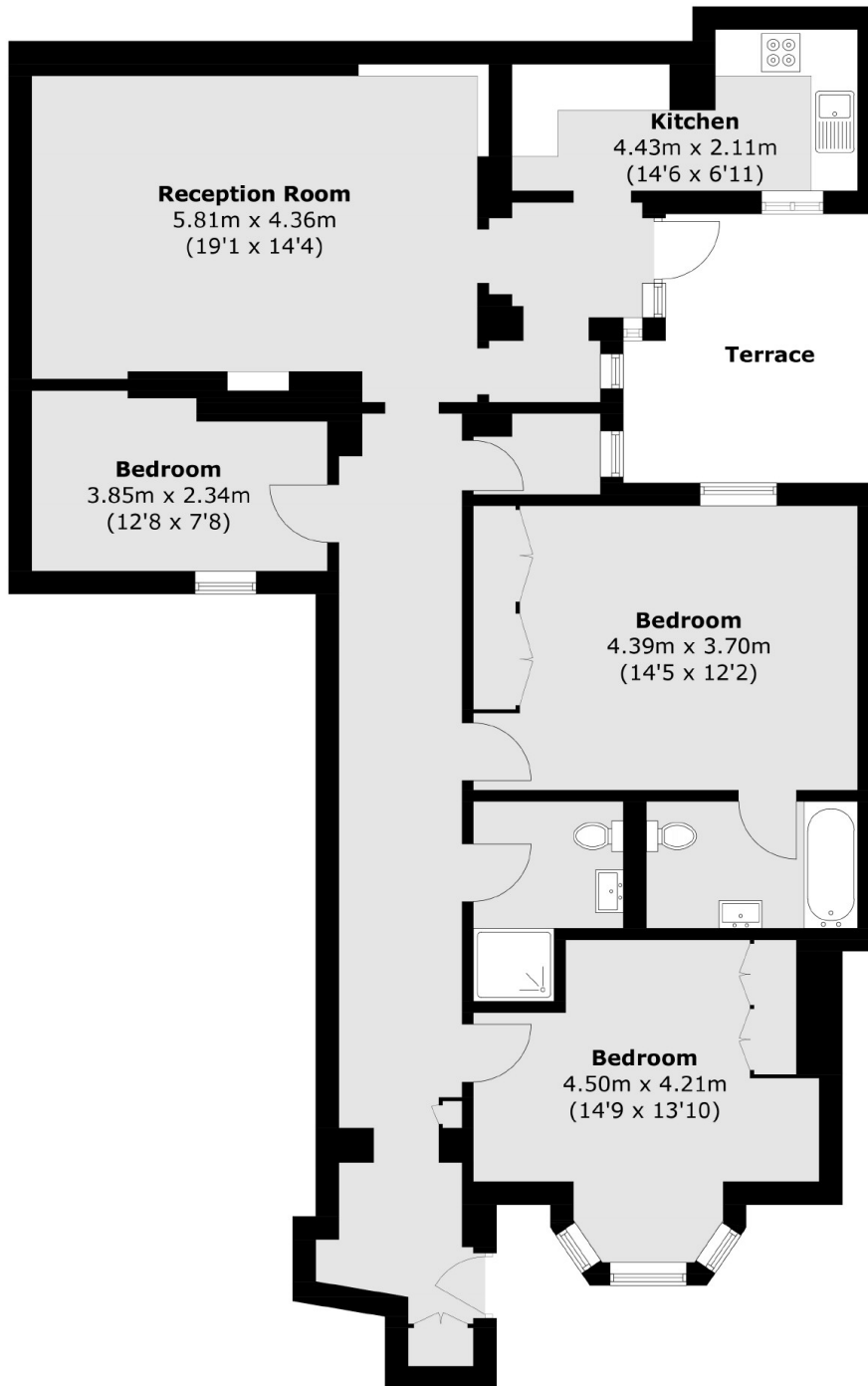
Set back from the road in an imposing Victorian Period conversion with off street parking. There are three bedrooms, a spacious reception with wooden flooring, room to dine and access to the private terrace. There's a separate modern kitchen and en suite in the principal bedroom.

Palace Gardens Terrace is a prime Kensington address ideally location for a short stroll to Kensington Gardens and Hyde Park, the shops and boutiques on Kensington High Street and Notting Hill, as well as plenty of transport links across and out of London.

Features

- Three Bedrooms
- Two Bathrooms
- Terrace
- Wooden Flooring
- Separate Kitchen
- RBKC

Palace Gardens Terrace, London, W8



Total area (approx.): 115.8 sq. m (1,246.5 sq. ft)
Terrace area (approx.): 10.6 sq. m (114.1 sq. ft)