



## Elsham Road, W14

£800,000

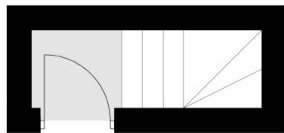
A two bedroom apartment in a Victorian period conversion on a residential road in RBKC. The property has a spacious semi open plan reception with room to dine, a high spec modern kitchen, Oak wood flooring and flooded with light throughout.

Elsham Road is located within easy access to the many shops and amenities of Westfield Shopping Centre, Kensington High Street and Notting Hill, with fantastic transport links across the city also nearby.

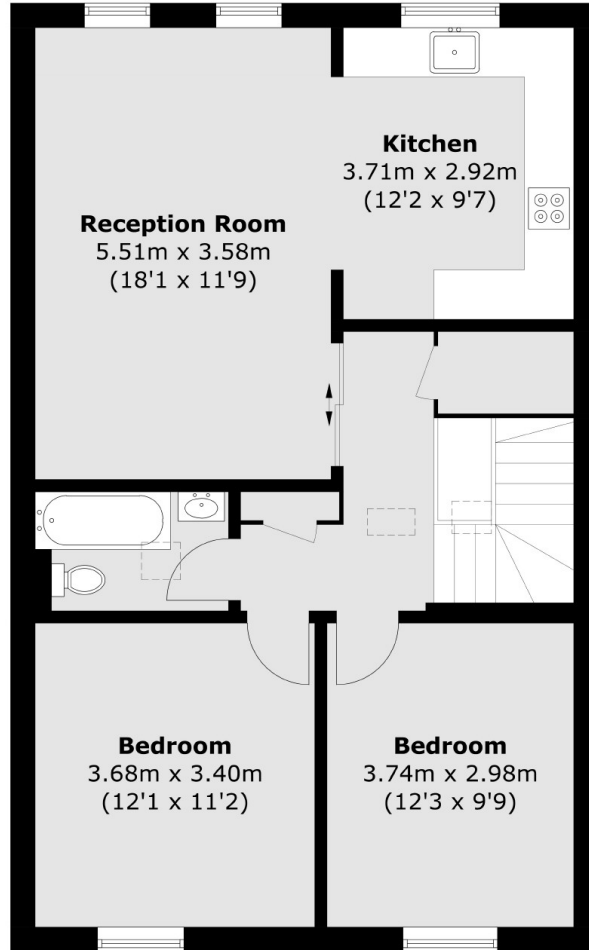
### Features

- Two Double Bedrooms
- Top Floor Flat
- Oak Wood Flooring
- High Spec Kitchen
- Victorian Conversion
- RBKC

Elsham Road,  
London, W14



**Third Floor**



**Fourth Floor**

Total area (approx.): 74.5 sq. m (801.9 sq. ft)