



Westbourne Terrace, W2
£1,925,000

Dexters



Westbourne Terrace, W2

A stunning lateral apartment on the second floor of a white stucco fronted building close to Hyde Park and Paddington.

Entered on the second floor via grand communal areas with a sweeping staircase into the spacious reception room with large windows, chevron wood flooring and ornate cornicing.

The eat in kitchen is ideal for entertaining with a bespoke Bulthaup kitchen, high specification appliances and plenty of space for a large dining table.

There are three generous double bedrooms, the principle benefiting from a dressing area and en suite bathroom (with jacuzzi bath and separate shower) and all three bedrooms have fitted Neatsmith wardrobes. The separate family bathroom is of an equally high specification as the rest of this beautiful home.

Westbourne Terrace is a tree lined road, within short walking distance of Paddington Station, giving easy access across and out of London and to Heathrow. The green spaces of Hyde Park are close by, as are a plethora of shops and restaurants.

Features

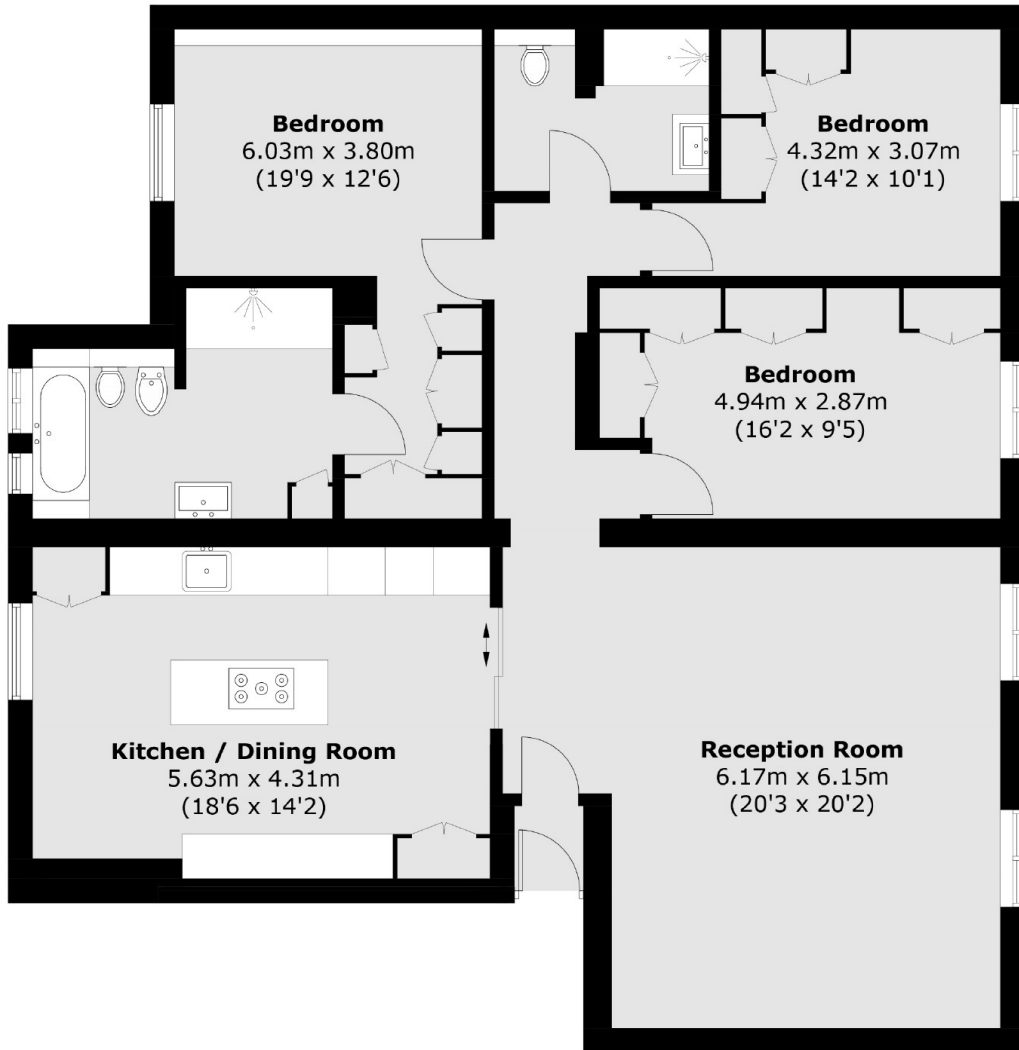
- Three Bedrooms
- Two Bathrooms
- High Specification
- Eat in Kitchen
- Hyde Park
- Paddington







Westbourne Terrace,
London, W2



Total area (approx.): 125.9 sq. m (1,355.5 sq. ft)